

# INSIDEHOPE

Summer 2009



## *80 Years of Preparing Servant Leaders*

*Celebrate Hope Annual Dinner*  
Page 6

*Spring Musical*  
Page 8

*New Student Housing*  
Page 9

*History of Hope*  
Page 10

## TIME TO REFLECT AND PROJECT



Anniversaries present us with an opportunity to look back over a period of time and reminisce. We reflect on relationships established, blessings received, places lived, and goals achieved

over the years. Sometimes we are even confronted with memories of challenges or hard times that were overcome with the help of good friends and a faithful God who has never forsaken us.

I remember a presentation I did for one of my graduate classes in higher education on the importance of acknowledging institutional history and heritage. Many colleges fail to do so and consequently lose appreciation for the contribution of those who established the foundation upon which to build and plan for the future. My college president mentor, Dr. Marshall Leggett who served at Milligan College, was a master at relating the early accounts of how that school began and he shared it with every incoming class. He recently sent me a copy of his published memoirs relating to his 15 years as president.

When I arrived at Hope on the occasion of our 75<sup>th</sup> anniversary, one of the first things I did was to begin accumulating as many documents from the past as possible. We are retaining them in our University archives for future generations and would appreciate any others that alumni or friends might like to add to the collection. I talked with resident historians such as Thelma Laster and Medford Jones and listened as they recounted past experiences. Their

love for this school permeated every story. Today, I find myself often asking John or Katherine Rowe some question about the past and am always amazed at their vivid memories of former students, faculty, and staff. I learned that we have a rich heritage and are deeply indebted to the visionary leaders who have brought us to this point.

Anniversaries are also an occasion to look ahead. What will this new chapter of our lives hold as we transition to the next stage? We consider making career changes or moving to new homes. When we get older we start thinking about grandchildren and retirement. As we recognize 80 years of preparing servant leaders at Hope International University, we think about the future and what is in store for our school.

In just a few weeks, construction will begin on a new student housing development on the south end of our campus. This is a project that has taken four years of planning and negotiation. As the University secured smaller parcels of property over the past decade, it positioned us to transform 80 old dilapidated apartments, two run down office complexes, and the seven story office building into what will be a beautiful addition to the local community. The property has been sold to a developer who will construct 350 furnished student apartments (1200 beds) around a seven level parking garage. We will then lease back as many units as we need. The complex will have nine courtyards, a swimming pool and fitness center. On the street level will be retail stores and shops to serve the campus.

In looking to the future, we believe it is important to be entrepreneurial in the delivery of

Christian higher education. The world is changing and with new technology come opportunities to broaden our outreach. Through church partnerships and online classes, we are now able to offer educational programs at various locations around the United States and throughout the world. These innovative, flexible, and responsive approaches by Hope International University are reaching more people than ever in the fulfillment of our mission to empower students to serve the Church and impact the world for Christ.

We are fully aware of the current economic challenges confronting the country and higher education in particular. In the next decade, fulfilling the dreams of those who founded our school will not be easy. When Pacific Bible Seminary was established in 1928, within just a few years we were in the throes of the Great Depression. Undoubtedly there were some who wondered if the dream would survive. But with the help of God and his people, it did. And now here we are 80 years later facing what is considered to be the greatest financial crisis since that time, and we do so with confidence that God will continue to provide for our needs, as long as we are faithful to His calling.

The partnership of hundreds of churches and individuals is a blessing we do not take for granted. We seek to be wise stewards of what is entrusted to our care and to use those resources in a manner that builds up the Kingdom of God. These continued relationships will help make the next decade one of dreams fulfilled.

Dr. John Derry  
President

# HOPE INTERNATIONAL UNIVERSITY

Summer 2009

Magazine

**Publisher:** David Poole

**Editor:** Leroy Fulton

**Design/Layout:**  
Rhonda France

**Photographers:**  
Robin Hartman  
Kelly Kappen  
JoJo Nieves  
Zaya Tserendondov  
Michael Slider  
Liz Weideman

**Contributing Writers:**  
Roger Beard  
Kelsey Dettman  
Leroy Fulton  
Brenda Guzmán  
Michelle Lewis  
Tim Gooszen  
David Poole  
Sarah Reed  
John Rowe  
Nathan McWherter

**Authorized Organization's  
Name and Address:**  
Hope International University  
2500 East Nutwood Ave.  
Fullerton, California 92831  
Website: [www.hiu.edu](http://www.hiu.edu)

**Publication Title:**  
*insidehope*

**Issue Date:**  
June 2009

*insidehope*, June 2009  
issue, is published by  
Hope International University  
2500 E. Nutwood Ave.  
Fullerton, CA 92831.

Hope International University  
was founded in 1928 as  
Pacific Bible Seminary and  
has since grown to two  
schools - Pacific Christian  
College, School of Graduate  
& Professional Studies - all  
with the mission of  
*empowering students  
through Christian higher  
education to serve the  
Church and impact the world  
for Christ.*

- 4 Campus News
- 6 Celebrate Hope Annual Dinner
- 8 Spring Musical
- 9 New Student Housing
- 10 History of *Hope*
- 18 Foundational Leadership
- 20 Athletic History
- 21 Alumni News
- 25 Honor Roll

Back Cover - Upcoming Events





*Mark Comeaux, Aaron Siefker, Bill Czech, & John Derry*

## ***Siefker Named Athletic Director***

Hope International University is pleased to announce the hiring of Aaron Siefker as the new Athletic Director. Siefker, who has served as the Women's Soccer Coach over the last three years, will continue in his coaching role along with the new Athletic Director responsibilities.

Vice President of Student Affairs R. Mark Comeaux says, "Hope International has been blessed with outstanding coaches and we are excited to be able to use one of our current coaches in the leadership of our Athletic Department."

In the three years Siefker has worked for *Hope*, he has worked his way up the Athletics chain of command spending his first two years as an Assistant Athletic Director and this past year as the Associate Athletic Director.

The Athletic Director position became available after Greg Pappas resigned as the AD and Men's Basketball coach in March to spend more time with his family.

As the Women's Soccer coach, Siefker has built up a career record of 24-26-6. In 2008, the Royals finished 10-5-3. In 2007, the team finished 11-8-2 with the 11 wins setting a program high for wins in a season.

Siefker stated, "I am humbled and honored that President John Derry and Mark Comeaux have the confidence in me to do the job. I am excited about the opportunity to lead the Athletic Department."

Prior to HIU, Siefker spent seven years honing his skills as an Assistant Soccer Coach at Azusa Pacific

University. He also graduated from APU with a Bachelor's Degree in Political Science and a Master's Degree in Education.

## ***Czech Named Head Men's Basketball Coach***

Hope International University is pleased to announce the hiring of William (Bill) Czech as the new Head Men's Basketball Coach. Czech joins the Royals staff after spending the last 14 years as the Head Coach of the Fullerton Union High School Men's Basketball Team. He leaves the Indians program with 219 victories - the most in school history.

Vice President of Student Affairs R. Mark Comeaux spearheaded the search committee and had this to say about Czech's hiring, "We received nearly 45 resumes and we determined Bill was an excellent fit for Hope International. We are pleased he was interested in the job and proud to add him to our staff."

On the strength of winning 12 CIF games under Coach Czech, Fullerton High has finished amongst the top ten in Orange County three of the last six years. FUHS has won three Freeway league titles in the same time frame.

Czech was named the Indians Head Coach in 1996 and has produced an overall record of 219 wins versus 141 losses. In the last ten years, his record is really impressive with 195 wins and 67 defeats. Last season, the Indians finished 16-12 overall.

As proud as he is of his players on court, he beams with pride when thinking about his players in the classroom. In his fourteen years of coaching the grade point average of the team has never dropped below 3.0. In 1997, the Indians were the State Academic Champions with the highest team GPA in the state. They also finished in the top ten in 2007.

"I am looking forward to taking on the challenge of coaching at Hope International University," stated Czech. "I consider it a great honor to be chosen as the coach. I have had a chance to meet the players and I think that we have a lot of characterized individuals within the program. I look forward to coaching them."

Czech has served as a Resource Specialist Program Teacher at Fullerton Union High School since 1996. He will remain in that role even after taking over the men's basketball coaching duties at Hope International.

Educationally, Czech earned a Teaching Credential and Master's Degree in Special Education from National University. He completed a Bachelors of Science in Health Education from California State University Long Beach.

Reflecting on his strong local ties, Czech added, "I would like to start establishing a tradition of success within the Men's Basketball program with a strong emphasis on recruiting Christian men."

Coach Czech resides in Anaheim with his wife, Yaneth, and their kids- Lewis (12) and Billy (7). The Czechs are members of the First Evangelical Church in Fullerton.



## *Historic Season Comes To An End*

Parkville, MO - The Royals' goal of a National Championship came up two wins short as they fell in the NAIA Semi-Finals to California Baptist 3-1 (30-16, 29-31, 30-21, 30-26). However, the loss should not put a damper on the successful and historic season for Hope International which includes qualifying for the NAIA National Invitational for the first time ever.

The highlights of the season include beating the NAIA's #1 team twice- Park early in the season and California Baptist to close out the regular season. Their #4 ranking was the highest ever for the program. The cap to the season was qualifying for Nationals which represents the first time any athletic team from Hope International qualified for an NAIA National Tournament.

In the second set, the Royals played their best as Senior Nelson Hernandez and Junior Alex Figueiredo each had four kills. Figueiredo finished with a team high 12 kills to end the year with a career high 386 kills. Hernandez ended with

9 kills and 5 blocks in his final match in a Royals uniform.

Seniors Rich Camerlengo and Gary Ramirez finished the final match of their careers with 6 and 4 kills respectively. Both players also finished with 4 blocks.

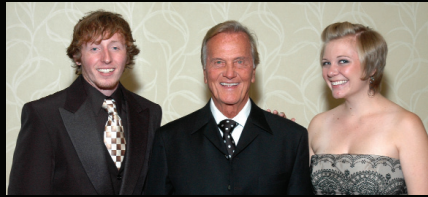
Senior setter Shawn Cui passed out just 13 assists in his final Hope International appearance. He picked up 760 assists for the year.

Freshman Aurel Stenzel had 8 kills for the match to finish second on the team with 216 kills for the year.

Junior Noah Casaquit dug up 9 balls to finish the season with a team high 289 digs- the individual season high over the last six years.

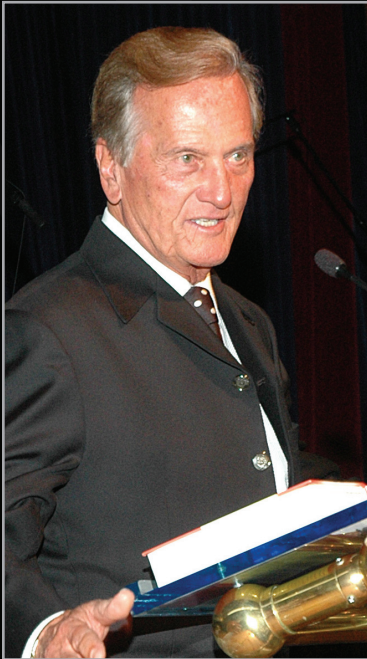
Head Coach Victor Jennings-Santiago believes this season is a sign of better things to come for Hope International Men's Volleyball in the next few years.

# HIU CELEBRATE HOPE DINNER



## SPIRIT OF HOPE AWARD

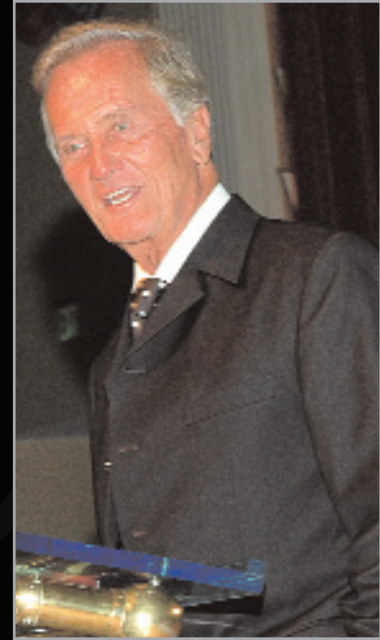
On Friday, Oct. 17, Hope honored its 80<sup>th</sup> Anniversary at the annual Celebrate Hope Dinner that took place in the Grand Ballroom of the Disneyland Resort in the city of Anaheim. The event hosted approximately 600 guests, including alumni, faculty, students, and friends.



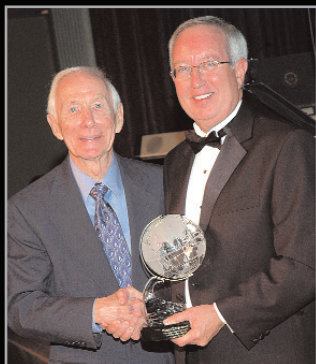
The student entertainment included the University Chorale directed by Dr. Joseph Cho, and musical retrospective through the years by Kayla McGill and Andy Pervorse. Dr. Christopher Gillette lead a professional jazz band which provided incredible dinner music. In addition, a new video celebrating the 80th anniversary was premiered.



The keynote speaker was Pat Boone, international recording artist, actor, church leader, entrepreneur, and best-selling author. He currently serves as the chairman of the University Board at Pepperdine University. Boone contributed a strong motivational speech on the importance of Christian Higher Education with several personal



examples from his family experiences. Over \$100,000 was raised toward student scholarships and David Poole, Vice President of Institutional Advancement announced that the University's major donor group - The Hope Associates had exceeded 130 members and the percentage of alumni giving is the highest in University history.



Don Brookover, longtime friend and supporter of Hope International University was this year's recipient of the Spirit of Hope Award. Mr. Brookover had a long and successful

career as an executive with the Honeywell Corporation that began in 1952 and took him to numerous places across the United States including Alaska and Hawaii.

As a strong supporter of Christian Higher Education, Mr. Brookover began his association with Hope International University in 1989 first serving as Executive Vice President responsible for Internal Affairs & then Interim President between Knofel Staton and Roy Lawson. He continued to advise the University as a consultant and later Chairman of the Board. In addition,

he was a member of the President's Forum and served on numerous committees with his last assignment as the Executive Officer for Real Estate. The University honored him with the Hurst Founder's Award in 2001.

During his career, he and his wife Leta have been active with the local Christian Church and community. Mr. Brookover is presently a member of Eastside Christian Church in Fullerton, California and has served on the Elder Board as both a member and Chairman.

## OKLAHOMA!

This year the Music Department presented Oklahoma! starring Andy Pervorse and Anna Quick as the lead characters, with Brittany Wright, Bekkah Green, Cameron Benton, and Alex Jackson playing key roles.

The story centered around Curly McClain (Pervorse) as he attempts to woo the stubborn and confused Laurey Williams (Quick). Conflict arises when the angry and lonely Jud Fry (Jackson) also strives to win Laurey's heart.

The show featured music by Richard Rodgers, was written by Oscar Hammerstein II, and is based on the play "Green Grow the Lilacs" by Lynn Riggs.

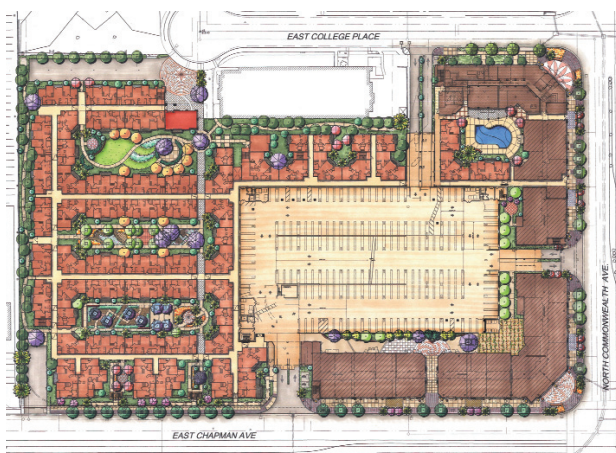
Matinee showings were on Thursday March 12, at 12 p.m., Friday Mar 13 at 10 a.m., and Friday March 20, at 10 a.m. The evening performances were Thursday March 19, Friday March 20, and Saturday March 21, at 7:30 p.m.







Demolition crews are firing up bulldozers and excavators daily to crush apartment and office buildings on the south end of the campus at Chapman and Commonwealth Avenues to make way for new student housing. The leveling paves the way for an estimated \$140 million student-housing project with 350 units and 1,189 beds targeted for *Hope* students and other higher-education schools in the area. Inland American Communities is a wholly-owned subsidiary of Inland American Real Estate Trust Inc., headquartered in Dallas and is in charge of development for the project. The target date for student occupancy is August of 2011.



## HIU LEGACY SERIES



Hope International University had its beginning as an institution of Christian Higher Education in 1928 under the name of Pacific Bible Seminary.

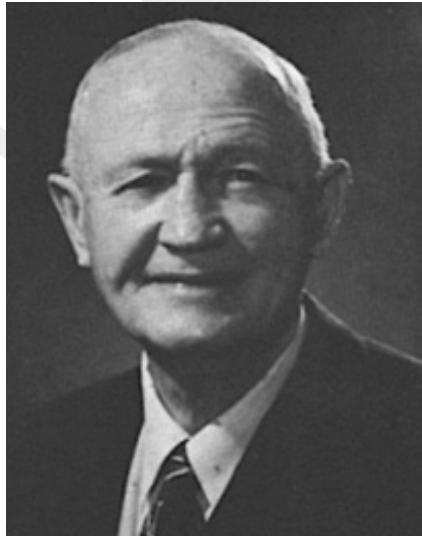
It was founded in a time when the Independent Christian Church was in development and its people were founding Christian institutions. A committee was formed in Southern California to establish a school to train church leaders. Initial records of the committee date to March 1, 1928. In June,

the committee called George P. Rutledge to be the President of the new institution. He did not move to the area and resigned, effective December 31, 1928.

Classes began for Pacific Bible Seminary in the basement of the Alvarado Church of Christ in Los Angeles on January 3, 1929. This remained as the home of the school until the move to Long Beach in 1930.



The July 6, 1929 Minutes of the committee record the first appearance of Dr. McKenzie Meldrum, who was to become the college's next President. He served until May 3, 1930.



### *Dr. James G. Hurst, First President of HIU*

Dr. James G. Hurst is recognized as the first “working” president of Pacific Bible Seminary. Having previously served as a minister at Huntington Beach Christian Church, Dr. Hurst was appointed as a faculty member of PBS in 1929, was named Vice President in January of 1930, and was elected as President on June 11, 1931. Dr. Hurst brought the needed strength and continuity to what had been an unstable beginning for the college. President Hurst’s leadership style, which included love, concern and deep involvement, stamped the character for the first 25 years of the college.

Hope International University originated as Pacific Bible Seminary,

which was founded at the Alvarado Christian Church near downtown Los Angeles. Classes were then moved to First Christian Church of Long Beach where George P. Taubman preached. In 1940, the school moved to a permanent campus on Anaheim Street in Long Beach. During this time, two prominent ministers, James Hurst, President, and George Taubman, Dean led the college. These men managed to mesh congregational and college roles together, anticipating a long history of church-college interdependence. During this time the faculty, administration and staff were all part time and the enrollment of students was between 30 and 50. The students lived in apartments and

homes off campus, often commuting from the Los Angeles area.

Both Dr. and Mrs. (Martha) Hurst were known as sacrificial leaders who led by example. As a minister and educator, Dr. Hurst laid a careful foundation for Biblical faithfulness in curriculum, service, and involvement, which drew significant students and faculty to the fledgling institution. Dr. Hurst’s alert and faithful leadership carefully and prayerfully shaped the 80-year history of what is now Hope International University. He served as President while continuing to serve as minister at the Huntington Beach church until his untimely death in 1953.



*Dr. Kenneth Stewart, Second President of HIU*

Dr. Kenneth Stewart became the President of Pacific Bible Seminary in 1954. Dr. Stewart moved his family from Lincoln Christian College in Illinois to begin a period of strengthening and movement towards academic recognition. Almost immediately after Dr. Stewart became president, Harvey Beard, a professor who began teaching part-time in 1936, became the first full-time professor. Soon thereafter, professors GB Gordon, Kenneth Hansen, TR Applebury, Park Netting, and John Rowe all became full-time faculty.

While bringing a permanent full-time faculty to the college, President Stewart expanded the 2.5-acre Anaheim Street campus by adding a

library, student dormitories, and several houses on the perimeter of the campus for student housing and college offices. In 1963, Dr. Stewart led the Board of Trustees and faculty to engage in a required self-study process that led to initial accreditation by the AABC (*American Association of Bible Colleges*). In 1969, the last year of his presidency, the Board and faculty received regional accreditation by WASC (*Western Association of Schools and Colleges*). Becoming accredited helped to increase the student body to over 200 students on the Long Beach campus by 1969.

Dr. Stewart, with his background in music and Christian ministry, guided Pacific Bible Seminary to expand

beyond the traditional Bible College curriculum, adding breadth to general education requirements. Seeing the need to equip students to extend Christian service beyond traditional church vocations, his vision laid the foundation for additional majors such as Psychology and Social Science. Late in his tenure, the institution was renamed Pacific Christian College, which reflected a more modern nomenclature while retaining the traditional and distinctive commitment to Christian ministry and service. To this day, the PCC undergraduate school at HIU is known for producing outstanding Christ-centered servant leaders in a wide variety of careers and vocations.



### *Dr. Medford Jones, Third President of HIU*

Medford Jones arrived on the campus on December 5, 1969, to begin his role as the third President of Pacific Christian College. He was known both as a teacher and as an evangelist. For many years he had been an outstanding evangelist throughout the church. This led him to Emmanuel School of Religion where he served as a faculty member in Church Growth.

One of his first assignments at PCC was to solve a financial crisis, that was partly the result of decreased value in stocks owned by the college. To assist with funding the college, he initiated a yearly series of "Fund Raising Dinners" at Knott's Berry Farm and later at Disneyland Convention Center. Dinners were conducted in nine sites in California, Arizona and New Mexico. The largest attendance was 1,700 at Disneyland. These dinners increased donor support from individuals and churches.

To reach the youth and to let the Church know more about the college, a musical group know as "HIS" traveled throughout the West, Northwest, and Southwest in 1970 - 72 with John and Katherine Rowe.

An important event during Jones' presidency was moving the college in 1973 from Long Beach to Fullerton. This brought growth in facilities that allowed for growth in enrollment and programs.

During the tenure of Jones, the Graduate School of Church Dynamics began offering an M.A. in Church Leadership. This was the first of the Graduate Departments that were soon begun.

President Jones sought to encourage thinking on four major "church" and "ministry" issues. The first was that of "Church Growth". He was regarded as an expert in this area having held many Church Growth Seminars in churches all across the USA.

A second issue that he addressed was the "Priesthood of All Believers". He taught that in responding to the call to Christ we also are all called to ministry for Christ. This is our "vocation". Our occupation or career is how we earn our living.

The third issue is that of the Biblical concept of "Servant Leadership". Christians are to serve by leading and lead by serving.

The fourth issue Jones put forth was that of "Covenant". This is to be the basis of all our relationships and especially with God. In this relationship, both parties make a covenant with one another.

After retiring as President in 1981, he continued to teach in the School of Graduate Studies until shortly before his death in 2004. As a tribute to Dr. Jones, Hope International University established the Medford Jones Servant-Leader Award to recognize one student from each school who exemplifies the mission of the University.



### *Knofel Staton, Fourth President of HIU*

Dr. Knofel Staton became the fourth President of Pacific Christian College in 1981. Prior to coming to PCC, Dr. Staton taught at Lincoln Christian College in Illinois and at Ozark Christian College in Missouri. During his tenure here, several changes took place that served to clean up the college community. The campus underwent major repairs and enhancements, and a new policy was instated that only allowed Christian organizations to rent our facilities. This displaced some retail businesses that were established on campus when PCC moved to Fullerton, including a liquor store and a smoking paraphernalia head shop.

Dr. Staton sought to bring national awareness to the college by placing 90% of the Christian Churches on the mailing list and by traveling nationwide to communicate the news that PCC held the same accreditation as schools such as UCLA, as well as

accreditation with the American Association of Bible Colleges. Dr. Staton knew how to build good relationships with the supporting churches, which significantly changed the atmosphere on campus. It was made known that every PCC graduate earned their degree not only majoring in their chosen field, but also with an advanced education in Bible. Enrollment at the college grew from the mid 300's to nearly 800. During this period, PCC received Christianity Today's first "Fastest Growing Bible College Award".

Dr. Staton was a major influence in establishing the Financial Planning Ministry in cooperation with other Church related ministries, including Church Development Fund, Angeles Crest Christian Camp, and the Southern California Evangelistic Association. Through the efforts of this ministry, more than \$20,000,000 has been committed to the University

through Living Trusts.

After serving for 9½ years as President, surviving two major heart attacks, and on the advice of his cardiologist, Dr. Staton resigned from the presidency at the beginning of 1990- but he chose to stay on the faculty and continued to serve for another 16 years. Dr. Staton officially retired in 2006, and he and his wife Julia moved to Joplin, MO. In his own words, "More than 30% of my life has been invested in this wonderful college".

Knofel Staton continues to be a prolific writer, beloved teacher and respected preacher in the Christian Church. He has written 36 books, over 200 articles for magazines, and has preached all over the nation. To honor his decades of service and considerable gift for communication, Hope International University has established the Knofel Staton Communication Award that is given annually to a graduating senior.



### *Dr. E. LeRoy Lawson, Fifth President of HIU*

In the summer of 1990, Dr. E. LeRoy Lawson became the fifth president of Pacific Christian College. When he was invited to become our President, he was still serving as the Senior Minister at Central Christian Church in Mesa, Arizona. Because both the school and the church wanted to keep him, he continued in both positions until 1999 when he retired from the church after serving there for 20 years.

Dr. Lawson's legacy at Hope International University can be summarized as one of growth and development. After a brief lull in enrollment, the student body grew from 550 when he began in 1990 to nearly 1200 when he retired in 2003. There was also an attention to growth in the facilities. The Residence Halls, Pacific Auditorium, and Library were all renovated and the library was renamed the Hugh and Hazel Darling Library. The Terrace Office Buildings were purchased along with College Place Apartments. In 2003, The

Lawson-Fulton Student Center which houses the athletic pavilion, dining commons, Student Affairs offices, Student Government offices, meeting rooms and recreational facilities was completed and dedicated.

President Lawson also left a legacy of academic growth at HIU. In 1997, the institution achieved university status and adopted the name Hope International University. Within the University, three schools were established: Pacific Christian College remained as the traditional undergraduate school, and The School of Graduate Studies and The School of Professional Studies were added. Academic programs that began under Lawson's tenure include: The Adult Degree Completion program (1993), the MBA program (1995), the Global Language Center (1997) which was later renamed the Institute of International Studies, the Distance Learning Program (1997), and The London Chair of World Evangelization (1999) that later became the London Institute of Evangelism.

Having served so many years as a senior minister, Dr. Lawson wanted the college to be closely related to both the Church and the community. He would often travel throughout our supporting churches preaching, and he sent groups of students to youth camps and conventions, and endorsed the school's musical group EKKLESIA and the drama group ACTS. In an intentional effort to make a greater impact and connection to the local community, Dr. Lawson assigned Dr. Leroy Fulton to becoming involved in the Chamber of Commerce, Rotary Club and other community activities which led the Fullerton Chamber of Commerce to honor HIU as "Business of the Year".

Dr. Lawson's career has included serving as a minister to local churches in Oregon and Indiana and at Milligan College in Tennessee as a faculty member, and later as a Vice President.





## DR. JOHN DERRY: THE FIRST FIVE YEARS

In August of 2003, the Trustees called Dr. John Derry to serve as the sixth president of Hope International University. His extensive experience and career in the area of Christian higher education were a good fit for the school at this stage of its development. Improvements were made in facilities, programs, assessment, planning, budgeting, personnel, administration, governance policies, student life, and in building strong relations with constituent churches.

In 2006 programmatic accreditation of Bible and Ministry programs at the undergraduate and graduate level was attained with the Association for Biblical Higher Education. In 2008 the

Marriage and Family Therapy Program received candidacy status with COAMFTE and adult and graduate programs were relocated to facilities in Orange. The Western Association of Schools and Colleges gave the University a full seven year reaffirmation of accreditation in 2009.

The purchase of a final section of property on the

south side of the campus made possible a new student housing opportunity as the University finalized a plan with a developer who purchased the southern 6.8 acres of the campus to construct student apartments that would accommodate up to 1200 students.

Approval by the State of Washington was received to offer classes at *Hope's* Puget Sound Education Center,

and the University assumed responsibility for the Londen Institute for Evangelism.

The next five years are filled with some outstanding opportunities under Dr. Derry's leadership. New campus development and facilities are beginning to go



*Derry Family: L-R Jennifer Arblaster, Nelson Arblaster, Brendan Arblaster, Jaxen Derry, Aidan Arblaster, John Derry, Joryn Derry, Jane Derry, Jakin Derry, Alicia Derry, Jalyn Derry, and Jason Derry*

on the drawing board along with the expansion of new and innovative academic programs and models of delivery. Enhancements in online instruction and partnerships with local community colleges, churches and Christian colleges across the United States and around the world will set the pace for the next legacy being built by Dr. Derry.



## *HIU Legacy Series: G. B. Gordon, "Mr. PCC"*

From the pulpit and foxholes to television and the college classroom runs the multi-faceted life story of Gordon "G. B." Gordon.

As a young Christian leader in southern California in his early years, G.B. Gordon was a noted music leader and pianist. It was told that any youth or church conventions that hired G. B. as the music leader would typically draw the largest crowds. Throughout his varied career, G. B. held pastorates in California, Indiana, and Oklahoma and also served as a Chaplain in General Patton's Third Army, where he received the Bronze Star and the Army Commendation Ribbon. During the Korean War, he was an Air Force Chaplain and stayed on as a reservist until retirement.

In the late 1950's, G. B. was seen on television as the News Anchor on WICS-TV in Springfield, Illinois, where he also worked as a producer. It was in 1958 that G.B. moved West and joined the staff of Pacific Bible Seminary as Executive Director of Seminary Development and Professor of Speech, Radio, and Television. He soon met and married his bride Lou Ceil, who served as the first school nurse at Pacific Christian College and his devoted wife until his passing in 1997.

During his years with the college, G. B. served under presidents Kenneth Stewart and Medford Jones.

He was Vice President for Development when the school was moved to Fullerton, and his first

campaign here was to raise \$1,000,000 to pay for the college dorms. G. B. was affectionately known as "Mr. PCC" because he never forgot a name and never hesitated to ask for a contribution as he traveled among the churches from California to Indiana.

Born in Joplin, Missouri, G.B. earned degrees from Fullerton College, Pacific Bible Seminary, Butler University, and Northwestern University. He was a professor, an administrator, a TV personality, a preacher, a fund raiser and a friend raiser, and a great promoter of PCC wherever he went. To this day, his impact on those he encountered along the way has helped to shape the University as we know it.



*HIU Legacy Series:  
Professor Wm. Harvey Beard*

It's 7:30 AM and at the Pacific Bible Seminary campus in Long Beach, CA, Professor Harvey Beard has been on campus since 7:00 AM and is now in his class room ready to begin Greek class—a daunting hour to begin the study of a language no longer spoken in the way the New Testament was written. The students who had waited until the last possible minute to get up and dressed, grab their notebooks and White's Greek Textbook, rush into class rubbing the sleep out of their eyes and hoping they wouldn't be the first called on to recite the Greek verb forms under review.

William Harvey Beard knew Greek well. In chapel as well as in local church services, Professor Beard would always bring a well-worn Greek New Testament and follow along in the original language of the New Testament. It was somewhat intimidating to be giving a talk on a Bible text and look out to seek Professor Beard following your interpretation by reading from the original text!

Students in the classes of Professor Beard during the years of

1938 to 1978 were given the opportunity to learn from a man who had given his life to teaching and serving students desiring to gain the skills and insights essential to ministry.

Throughout his career, teaching was his major contribution to the character of life at Pacific Christian College. In addition to the Greek classes, his Old Testament studies brought the richness of historical, archeological and geographical details to the narratives and poetry of the Old Testament literature.

His teaching style covered the details well, but the humor and real life of the characters would come to life as the Biblical material was studied. Most students in Professor Beard's classes came away with a new respect for and insight into what God was doing through the history covered by the Old Testament.

In addition to his teaching contributions, Harvey Beard also served as Vice President during the early days of the college. While this position put him into policy and strategic planning, he became the man who would take administrative assignments that were needed to keep the college operations on track.

In the 60's the growth of the

college required an on-campus venue for textbooks and supporting supplies. Who would do this? Harvey Beard turned the front half of his office—the office next to the President's office—into a bookstore. He ordered and displayed the textbooks the faculty selected for their classes as well as provided supplemental selections from the latest materials available. Eventually a bookstore opened adjacent to the campus, but it was Harvey Beard who first got the needed service up and running until it could be passed on to others recruited to operate a bookstore...not as an addition to a professor's focus on teaching and study.

Although he never taught missions, his passion for ministry led Harvey Beard to keep up correspondence with missionaries around the world, providing support from his own funds, and eventually traveling around the world to support and encourage men and women serving the Kingdom of God.

A scholar, a student of Biblical history, and a willing servant, Professor Wm. Harvey Beard was an essential part of the growth and reputation of Pacific Christian College in its formative years.

## ATHLETICS THROUGH THE YEARS

As with most universities celebrating 80 years of existence, athletics has been an important part of HIU's culture throughout the years. This has been especially true of the last 25 years for the Royals at *Hope*.

In the mid 1950's, Men's Basketball became the first sport to participate at the intercollegiate level. By the mid 1960's, men were also playing soccer and baseball intercollegiately. Just prior to the 1976 school year, intercollegiate athletics was cut back to club-level status.

1984-85 saw the return of intercollegiate athletics for the Royals with Men's and Women's Basketball, Women's Volleyball, and Men's Soccer ready to compete at the National Christian College Athletic Association (NCCAA) level. In

1988, Women's Softball and Men's Volleyball were added to the mix, and Women's soccer joined in on the fun in 1996. Four years later, Men's and Women's Tennis brought the total number of *Hope* athletic teams up to nine.

In the fall of 1995, the Royals moved from NCCAA Division II to NCCAA Division I - a move that made athletic scholarships available for the first time in the school's history.

The crowning achievements for the entire Athletic department came in the form of becoming members of the National Association of Intercollegiate Athletics (NAIA) in 1996, and arguably the NAIA's toughest conference - the Golden State Athletic Conference (GSAC) - in 1998.

Since the return of athletics in 1984, the Royals have made 36 trips to the NCCAA National Tournament which has produced 8 National Championships - Women's Volleyball ('88 and '93), Women's Softball ('94),

Men's Soccer and Women's Softball are tied with six players named to an All-GSAC team. All college athletes are only eligible after first embracing the term "student". 47 players earned All-GSAC Scholar Athlete honors for their excellence in the classroom and on the playing surface. Women's Soccer and Women's Volleyball have both had 10 players earn those honors. Seven times an athlete was named an NAIA Scholar Athlete including three Women's Softball players - **Kristin Phillips-Mycke (BA '98)**, **Catherine Crow-Bachman (BA '02)**, and **Charity McMillan-Buckley (BA '02)**.

As the teams increase their GPA and grow more competitive, the future looks bright for HIU Athletics. The academic and athletic honors for the Royals will continue to grow for years to come.



Men's Volleyball ('01, '02, '03, and '05), and most recently Men's Tennis ('08). About 75 players have been named All-Americans, including one at the NAIA level - **Jasmine Nault (BA '08)**. Men's Soccer leads the way with 14 All-Americans which includes one NCCAA National Player of the Year - **Donald Laing (BA '99)**.

Over the last nine years, 24 players have been named All-GSAC players in their respective sports.

No athletic program would be complete without a Hall of Fame. The Royals have enshrined 10 members into their Hall of Fame which opened in 2004. **Brian Keiser (Men's Basketball)**, **Rhonda Staton (Softball)**, and **Rusty Howard (Baseball)** are the three players that have been named, while the remaining seven inductees are former coaches and staff members.

## CHUCK BOOHER MINISTRY HALL OF FAME AWARD



Follow the trail of Chuck Booher's ministries, and a pattern of godly leadership emerges. In God's power, he enters a ministry, evaluates it, prayerfully sets new goals for it, then he begins to purge and lead with the passion of a godly leader straight out of the pages of the Old Testament. Chuck desires to preach the pure Word of God, and to challenge people to a life of all-out spiritual commitment to God.

Chuck married Pam in 1978 and graduated from Pacific Christian College in 1979 with a degree in Youth Ministry and Biblical Studies. He led fruitful youth ministries at Garden Grove Christian Church, Knott Avenue Christian Church, Crossroads Church in Corona, and Christ Church of the Valley (CCV) in San Dimas. After 15 years of leading over 1,300 youth at CCV, Chuck was hired as their senior pastor. After 4 years, the church grew to over 4,000 dedicated people who transformed the local community and supported many world-wide missions.

In 2007, Chuck answered the call to become the senior pastor of Crossroads Church, and once again God used Chuck and Pam to transform a ministry! Today, Crossroads is an exploding body of over 6,000 believers who are passionately responding to Chuck's call to all-out commitment to Christ, His cause, and His community.

## SCHOOL OF PROFESSIONAL STUDIES AND SCHOOL OF GRADUATE STUDIES MERGE

A plan was implemented this academic year for the School of Professional Studies and the School of Graduate Studies to merge and become one program called the School of Graduate and Professional Studies. "By merging SGS and SPS into SGPS it will ultimately increase efficiency," says Chris Davis, Dean of School of Graduate and Professional Studies.

The two schools have been working closely for the past couple of years and have now decided to integrate for a number of reasons.

"Increased efficiency results in significant financial savings," Davis said. "Our Academic Master Planning Committee recommended University restructuring about one year ago. When the WASC accreditation team came to campus in the spring, it also recommended restructuring for increased efficiency and financial savings. The administration is acting on those recommendations."

"The new School of Graduate and Professional Studies will be able to serve adult students from their first college course through an associate's degree, a

bachelor's degree, and then a master's degree in fields related to Business, Education, Ministry, Intercultural



Studies, and various helping professions," said Davis.

"On-ground offerings are available. However, SGPS will also offer most of these programs fully online, extending *Hope's* reach around the world."

SGPS is located at *Hope's* Orange Education center, which is at 2100 W. Orangewood Ave. The office is only five miles south of HIU's main campus and is adjacent to the 57 Freeway.

"The new facilities include classrooms, conference rooms, faculty and staff offices, and the Hope Counseling Center," Davis concluded. "We invite everyone to come visit us."

## 1960's

**Larry (BA '64) and Judy (Munger/BA '70) Niemeyer** continue their ministry in Kenya amidst the turmoil in the country. They travelled to Germany where they shared about discipleship with pastors and missionaries working in Berlin, Kosovo, Germany, Bosnia, the Czech Republic, Italy and Romania.

**Bill (BS '71) and Margy (Trout/BS '68) Hoff** enjoyed a great visit with their daughter Beka in the States. They are currently recovering from cataract surgery and two broken ribs Bill sustained in a fall. The latest project at the institute has been insulating the chapel roof. They will travel to Knoxville, TN for Christmas.

## 1970's

**Susan Ryan (Lyon/BA '73)** has happily retired to a farm in eastern Washington state after teaching special education in Reno, NV. She lives outside a small community where she is active in her local church working with the high school youth group and the town quilting club.

**Gary Fast (BA '77)** has been on staff with Seattle's Union Gospel Mission for 20 years and was recently promoted to Associate Director. Gary and Margaret live in Everett, WA and attend New Life Center Foursquare Church. They have four grown children (three of whom are married), and their sixth grandchild was recently born in April 2008.

**Donna Libby (Hindman/BA '79)** will be finishing a three year Master's of Library and Information Science degree in December 2008. She is the

director of the Learning Resources Center at Klamath Community College. Donna and Jim's oldest son is currently in seminary. Their second son and daughter are in college. Jim is the principal of a K-12 public school.

## 1980's

**Kimberly Coldren (AA '82, BA '82)** has been married to Andy for 18 years. They have one son, 13 years old. Kimberly is still teaching and loving the Lord. She currently resides in San Jose, CA.

**Tamara (Stack/FS '82)** and Phil Van Liew currently live outside of Seattle, Washington with their two children. Tamara works out of her home in a partnership business as she raises her children to know, love and serve our Lord. The family is members of Mars Hill Church

**Kim Lullo (Strater/BA '87)** and Dave Hamilton married on July 25, 2008 after 20 years of knowing each other. Their children, Zack (15), Kelsey (12) and Kaylee (13) stood with them as family gathered around. Kim serves as the Worship Director for Mission Viejo Christian Church and Dave continues to work for Church Development Fund and helps on the leadership team at Mission Viejo church. On August 13th, Kim underwent surgery for breast cancer and is currently undergoing chemotherapy. All reports are good, and our hopes and prayers are that after the treatments end in November, she will be cancer free!

**John Piercy (BA '85, MA '88)** has been the Senior Pastor at La Mirada Christian Church ever since November of 2000. John and Lisa have been

married since 1996 and have a daughter Kaylee Michele born October 1998.

**Billy LeJeune (BA '89)** is teaching 6th grade science while he works on a second Master's Degree in New Testament. **Diane (Carter) (BS '95)** started a new position as Associate Executive Director for TSAC, helping students. The LeJeunes live in Tennessee.

## 1990's

**Cheryl Robertson (Napier/ BA '90, MED '03)** was recently named Teacher of the Year at Vine Middle Magnet School where she has taught 6th grade science for 9 years. Cheryl has also completed her Educational Specialist (EdS) degree. Daren (BA '90) continues as an administrative assistant with a fabrication company in Knoxville. Daren and Cheryl's daughter, Chelsea, is 13 and an 8th grader at the same school Cheryl teaches. She recently placed 3rd out of over 180 projects in the Southern Appalachian Science and Engineering Fair at the the University of Tennessee.

**Steve Welch (BA '90)** has been teaching elementary school for 16 years. Steve and Helen have 3 children: Katelin 8, Lindsey 6, and Joshua 2. Steve speaks around the world on the cults. His website is [www.defendingthefaithministry.org](http://www.defendingthefaithministry.org).

**Robbie (BA '91, M.Div. '99)** and **Leanne (Haan/BA '93) Phillips** and their children, Carter, Will and Maggie will be moving to Wilmore KY as Robbie pursues a Doctor of Ministry degree from Ashbury Theological Seminary.

**Kirsten Lunsford (Kemp/BA '92)** and her husband, Matt, announce the birth of their child. Their daughter, Olivia Kate, was born on October 26, 2007. She joins her big sister, Ella Jane (4) into the Lunsford family.

**Thaddeus "Toby" Yurek (AA '93, BA '95, JD '08)** graduated cum laude with his Juris Doctorate from the William S. Boyd School of Law at the University of Nevada in Las Vegas in May. He completed the Nevada State Bar Exam, expecting results in November. Toby currently serves the Henderson Police Department as Lieutenant of Criminalistics (CSI). Toby and **Carrie (Belcher/BA '95)** have three boys: TJ, 8 years, and Tyler and Trey, twin 6 year olds.

**Dave (BA '94, MF '96)** and **Kristi (Emge/BA '96) Camplin** created a non profit organization in 2005 to give former foster youth the chance to attend college and receive the support they need to become self-sufficient young adults.

**Diane Bowen (Elledge/FS '97)** and her husband Mark are currently living in Folsom, CA where Diane teaches first grade. They have a 2 year old son and their second baby was born on December, 22, 2007

**Joseph Bahash (BA '98)** was acknowledged with the Orange County Teacher of the Year award. He also received the Crystal Bell award after being nominated by his peers.

**Ryan (FS '98)** and **Lori (Lenz/BA '98) Morrison** relocated to Bakersfield, CA in December 2007. Lori works for the American Cancer Society as a manager for their Relay For Life program. Ryan started his own custom

furniture business. They are also busy keeping up with their 1 1/2 year old daughter, Olivia.

**Stephanie Matheny (Schubert/ BA '99, TC '01, MED '07)** and her husband, Jon, announce the birth of their child. Their daughter, Madeline Grace was born July 3, 2008. The adoring grandparents are Priscilla and Joel Schubert.

**Kellianne Jackson (Wright/BA '99)** and her husband Forrest expected their second child in June of 2008. Their eldest child is Porter. The Jacksons live in Dallas, TX where Kellianne stays home and Forrest is the General Manager of his family's business.



**Brian Hogan (MA '99)** just published his first book, "*There's a Sheep in my Bathtub: Birth of a Mongolian Church Planting Movement*". He also trains church planters around the globe with Youth With a Mission.

**Tim (BA '99)** and **Amber Gooszen (Ransberger/BA '99, TC '00, MED '03)** are pleased to announce the birth of their son- Jay Payton. He joined older sister, Tiffany, in the Gooszen family on April 22, 2008. Tim continues to work at HIU as the Sports Information Director.

## 2000's

**Kaye E. Skinner (MA '00)** will be returning to full-time work as a

hospital chaplain/hospice chaplain after being on disability for several years due to hip replacement on both hips.

**Shelley Greene (Bergan/BS '00)** passed away on January 18, 2008. Shelley was a SPS grad with a BS in Human Development. She taught for the Saddleback Unified School District. She is survived by her husband Darcy and 7 children. Darcy is the Pastoral Minister at Mission Viejo Christian Church.

**Kimberly Ryan (Tolka/BA '00)** and husband Blake recently moved to Perth, Western Australia to work at RiverView Church. Kim is leading the Children's Ministry at one of the 4 campuses and Blake is the Business Administrator of the church. They have two children, Evan (3) and Madisyn (2).

**Julie Feliccia (Smith/BA '00)** and her husband, Frank, are proud parents of Gianna Joy Feliccia born on September 16th at 9:24 am. 7lbs 6 oz - and 20 inches.

**Jennifer (Whitmer/BA '01)** and Stephen Dunkley announce the birth of their child. Their daughter Emelia Faye was born on July 24, 2008. Steve and Linda Whitmer here at HIU are the proud grandparents,

**Mimi (Lee/BA '01)** and Eric McMillain live in North Carolina working as Campus Ministers at North Carolina State University. The McMillians have been blessed with 4 children; Ethan 5, Josiah 3, Caleb 17mos. and Abigail their newborn.

**Mark (BA '01)** and Kim Reiswig are currently living in Pasadena while Mark is finishing an MA in Intercultural Studies at Fuller Seminary. Kim is teaching Spanish at a local high school.

**Emily (Harvey/BA '01) and Travis Rocky (FS '99)** announce the birth of their daughter Claire, born September 13, 2007.

**Deanna Jasper (Durazzo/BM '00, MED '02, TC '02 )** and husband Eric announce the birth of their child. Their son, Ian Robert was born on February 23, 2008. The Jaspers currently reside in Yorba Linda, CA.

**Gary Wallace (BA '02)** is a Life Agent/Broker out of Irvine, CA and currently resides in Fountain Valley, CA. He attends Rock Harbor in Costa Mesa, CA

**Jennifer Diedrick (MA '03)** is currently raising her two boys after teaching kindergarten for 2 years and preschool for 10 years. Her husband, Jeremy is a member of the California National Guard. Jennifer and Jeremy live in Hanford, CA

**Jeff (BA '03) and Lydia (Merrell/BA '03) Herman** are pleased to announce the birth of their first child-Lila Victoria. She was born on Feb. 11, 2008.



Lila Victoria

**Nathan Lowrie (BA '03)** married Janie Guevara on September 14, 2007. They currently reside in Redondo Beach, CA where Nate is a Cargo Sales manager for an airline company.

**Joshua (BA '04) and Valerie Marshall** moved to Salem, OR where he is the Children's Pastor at Court Street Christian Church. Valerie is now a stay at home mom to daughter, Makayla, born August 2, 2006.

**Caleb Ternak (BA '05) and Michelle Forry** were married on April 20, 2008. They currently reside in Lutz, Florida. Caleb is an IT Systems Administrator for a company in Tampa Bay, FL.

**Katie Goode (MFT '05)** recently obtained her Marriage and Family Therapist license and now has a private practice in Newport Beach, CA.

**Jason Shafer (BA '05)** is currently working at Central Christian Church in Mesa AZ as a worship intern for a service called Third Format.

**Lisa Kowalski (BA '05)** is working with 6th graders at the ABC Christian Academy in Malawi, Central Africa. She plans on graduating with a M.Ed. in the Spring of 2009.

**Josh (BA '06) and Stacy Engle (Greek/BA '04, MED '06)** have taken missions trips to the Phillipines with YWAM in October. Stacy teaches at Fitch Middle School in Monterey County, where she has been able to touch the lives of 120+ jr high students

**Mandi Merrell-Goncalves (BA '06)** is working as the children's pastor at The Gathering At Corona in Corona, CA. She married Joao Goncalves in 2005. They have two daughters, Sophia and Savannah.

**Sabiha Mirza (Ali/MBA '06)** and her husband, Mazhar, announce the birth of their son. Rayhan Mirza, born on January 16, 2008 is daddy's pride and mommy's look-a-like.

**Kayleen Fream (BA '06)** currently resides in Peoria, AZ and is working as a second grade teacher in the Deer Valley Unified School District.

**Jamie Gendrano (MED '06)** and her husband, Romeo, announce the birth of their son. Anthony Parcarey Gendrano was born on May 28, 2008. They are so blessed to have this little bundle in their lives. Their prayers have been answered. The Gendranos are currently residing in Torrence, CA.

**Jenny Wilson (AA '07)** is currently working at House of Hope in Colorado as a house staff member. House of Hope is a Christian boarding school and therapy for high risk teens between the ages of 13-18.

**Albert Wolfe (BA '05)** is in his fourth year teaching English as an independent teacher at a university in China and is planning on doing a fifth. In April 2009, his first book *Chinese 24/7: Everyday Strategies for Speaking and Understanding Mandarin* came out (if you're interested in reading one of the reviews of the book, go to <http://www.saipantribune.com/newsstory.aspx?cat=3&newsID=90070>). He writes music (<http://music.laowaichinese.net/>), is working on a novel, and continues to post his latest discoveries about the Chinese language on his blog [www.LaowaiChinese.net](http://www.LaowaiChinese.net).



This Honor Roll of Donors lists the names of individuals, churches, corporations and foundations that have made gifts through cash, pledges or pledge payments received by the University between January 1, 2008 and December 31, 2008. Gifts received after December 31, 2008 will be recorded in the 2009 calendar year.

Every attempt is made to insure accuracy in this list. If we have made an error or omitted your name, please advise us by notifying the Office of Institutional Advancement at (714) 879-3901 ext. 2323 or email [mdmulryan@hiu.edu](mailto:mdmulryan@hiu.edu). To mail a correction, address it to Hope International University, Attn: Michael Mulryan, Office of Institutional Advancement, 2500 E. Nutwood Avenue, Fullerton, CA 92831.

## INDIVIDUALS

### *Contributions given to all funds.*

#### **Above \$30,000**

Mr. and Mrs. Jack Londen

#### **\$20,000 - \$29,999**

Dr. and Mrs. Leslie Christensen

#### **\$10,000 - \$19,999**

Mr. and Mrs. Theodore L. Clapper  
Dr. and Mrs. John L. Derry  
Mr. and Mrs. Gray Farley  
Mr. and Mrs. Del W. Harris  
Mr. and Mrs. James S. Langdal  
Mr. Robert Russell  
Mr. and Mrs. Randy Taylor

#### **\$5,000 - \$9,999**

Mr. and Mrs. James L. Anderson  
Mr. and Mrs. Robert M. Baird, Jr.  
Mrs. Hughie J. Barnes  
Mr. and Mrs. George J. Boose  
Mr. and Mrs. John M. Carter  
Mr. and Mrs. R. Mark Comeaux  
Mr. and Mrs. Ralph A. Jury  
Mr. and Mrs. Reinhardt W. Krueger  
Mr. and Mrs. Charles H. Lowry  
Mr. William J. McGarvey, Jr.  
Mr. and Mrs. Richard E. Nichol  
Mr. and Mrs. Timothy W. Winters

#### **\$2,500 - \$4,999**

Mr. and Mrs. Donald R. Anderson  
Mr. Bill G. Avery  
Mr. and Mrs. Jerry D. Briggs  
Mr. and Mrs. Michael Close  
Mr. and Mrs. Keith R. Doolittle  
Dr. and Mrs. Leroy M. Fulton  
Mr. and Mrs. Tom Gehrls  
Ms. Julie A. Kuns  
Dr. and Mrs. Neil L. Kuns  
Dr. and Mrs. E. LeRoy Lawson  
Mr. and Mrs. Gary B. Martin  
Mrs. Iona K. Matson  
Mr. and Mrs. David L. Poole  
Dr. and Mrs. John P. Rowe  
Mr. and Mrs. Steven D. Sachs  
Mrs. Bonnie L. Schemmer  
Mr. and Mrs. John Siefker  
Mr. Maurice and Dr. Vel Tamanaha Smith  
Dr. and Mrs. Floyd Strater

Mr. and Mrs. Michael R. Van Scoy  
Mr. Kenneth G. Walker  
Mr. and Mrs. John H. Weddle  
Dr. Mary E. Wright  
Mr. and Mrs. Paul C. Young

#### **\$1,000 - \$2,499**

Dr. and Mrs. Paul H. Alexander  
Ms. Anita R. Alltounian  
Mr. Ralph W. Atkinson  
Mr. and Mrs. William R. Barker  
Mr. and Mrs. Billy J. Bohannon  
Mr. and Mrs. Drue W. Boles  
Mr. and Mrs. Jon Brainard  
Ms. Myrna E. Brewster  
Mr. and Mrs. Donald L. Brookover  
Mr. and Mrs. Carl Camp  
Mr. and Mrs. Steven S. Carr  
Dr. and Mrs. Gene S. Carter  
Mrs. Lingkit M. Chan  
Mr. and Mrs. Phillip K. Charnell  
Mrs. Sarah E. Clabaugh  
Dr. James Colligon  
Mr. and Mrs. C. Duane Crackel  
Dr. and Mrs. Christopher A. Davis  
Mr. and Mrs. Richard D. Davis  
Dr. and Mrs. Philip H. Davis  
Mr. and Mrs. W. Gerald Fare  
Mrs. Emmeleine E. Ferguson, M.D.  
Mr. and Mrs. Gene R. Fisher  
Mr. and Mrs. Roger K. Frey  
Mr. and Mrs. William C. Harris  
Mr. and Mrs. Dean D. Heiser  
Mr. and Mrs. Dale A. Herman  
Dr. and Mrs. Larry Hostetler  
Mr. and Mrs. Calvin E. Jernigan  
Mr. and Mrs. Ronald W. Keller  
Mr. and Mrs. Richard A. Kirchner  
Mr. and Mrs. Louis J. Marcellin  
Dr. and Mrs. David L. Matson  
Mr. and Mrs. Kenneth A. Mayhue  
Mr. and Mrs. John S. McKinsey  
Mrs. Betty Megli  
Mr. Alfred W. Mills  
Mrs. Lauretta Mohrman  
Mr. and Mrs. Wallace Moser  
Mr. and Mrs. Kevin C. Odor  
Ms. Alice M. Palicz  
Mr. and Mrs. Eugene D. Pappas  
Mr. and Mrs. John Peterson  
Mr. and Mrs. Robert J. Pohl  
Mr. Aaron B. Powers  
Mr. Michael Prior  
Mr. and Mrs. Alan J. Pullen  
Dr. and Mrs. Stephen L. Richardson  
Dr. Francine H. Rippy  
Mr. and Mrs. Jerry D. Robertson

Mr. and Mrs. John D. Ruhlen  
Mr. and Mrs. Frederick S. Rusaw  
Mr. and Mrs. Dale B. Rycraft  
Mr. and Mrs. William M. Say  
Mrs. Patricia A. Soderquist  
Dr. and Mrs. Gene A. Sonnenberg  
Mr. and Mrs. Charles A. Stark  
Mr. and Mrs. Chester E. Stilabower, Jr.  
Mr. and Mrs. Larry W. Stradley  
Dr. and Mrs. David J. Timms  
Dr. and Mrs. John D. Webb  
Mr. and Mrs. Lawrence Winslow  
Mrs. Barbara A. Wood

#### **\$500 - \$999**

Anonymous  
Mr. and Mrs. Charles D. Arnold  
Mr. and Mrs. Peter J. Bina  
Mr. Donald G. Blumenthal  
Dr. and Mrs. Charles R. Boatman  
Mr. and Mrs. Donald R. Boucier  
Mr. and Mrs. William Burck  
Mr. and Mrs. William O. Christy  
Mr. and Mrs. M. Marshall Combs  
Mr. and Mrs. Glen A. Corey  
Mr. and Mrs. Larry Davis  
Mr. and Mrs. Anthony J. Decker  
Dr. and Mrs. Steven D. Edgington  
Ms. Merry C. Fitzpatrick  
Dr. and Mrs. Stephen Francis  
Mr. and Mrs. Mark C. Gerton  
Mr. and Mrs. GK Griffith  
Mr. and Mrs. Dean W. Gudgel  
Mr. and Mrs. Michael Hinkle  
Mr. and Mrs. William C. Holtzen  
Mr. and Mrs. Albert W. Johnson  
Mr. Robin H. Joyce  
Mr. and Mrs. Brett Kerekffy  
Mr. and Mrs. James E. Lain  
Ms. Betty A. Lee  
Mr. and Mrs. David Lurker  
Mr. and Mrs. Scott D. Mastie  
Mr. and Mrs. Richard L. Miller  
Mr. and Mrs. Joey Mitchell  
Mr. Michael D. Mulryan  
Dr. Tamsen Murray  
Mr. and Mrs. Mark A. Oler  
Mr. Mark O'Loughlin  
Mr. and Mrs. Charles E. Puckett  
Mr. and Mrs. David Radford  
Mr. and Mrs. Gregory G. Rizio  
Mr. Charles R. Roberts  
Dr. and Mrs. James L. Shields  
Mr. and Mrs. Stanley H. Showalter  
Dr. and Mrs. Knofel L. Staton  
Ms. Marilyn M. Steele  
Mr. and Mrs. Larry W. Taylor

Mrs. Marjorie Weichal  
 Mrs. Elizabeth B Welch  
 Mr. and Mrs. Jim L. Wells  
 Mrs. Reba D. Whittington

### \$100 - \$499

Anonymous  
 Mr. and Mrs. Daniel R. Ahlberg  
 Mr. and Mrs. Ramon J. Alarcon  
 Mr. and Mrs. Robert H. Alexander  
 Mrs. Karen L. Allison  
 Mr. and Mrs. Steven B. Allison  
 Mr. and Mrs. Kent A. Anderson  
 Mr. and Mrs. Tyrone Angel  
 Ms. Clarice Angel  
 Mr. Ronald J. Archer  
 Mr. and Mrs. Richard C. Ashley  
 Mrs. Beverly A. Ashworth  
 Mr. and Mrs. Steven A. Baeder  
 Mr. and Mrs. Gilbert J. Bailey  
 Mr. and Mrs. Bradley Baker  
 Mr. John L. Baker  
 Mrs. Barbara S. Barr  
 Mr. and Mrs. David A. Beals  
 Mrs. Ruth E. Beaman  
 Ms. Deborah Belialcof  
 Mr. and Mrs. David Bishop  
 Mr. Ian T. Blacker  
 Mr. Steven J. Block  
 Mrs. Constance M. Boeddeker  
 Mr. and Mrs. James F. Bogan  
 Mrs. Helen M. Bollen  
 Mr. and Mrs. David W. Bollen  
 Mr. and Mrs. Steelman J. Borden  
 Mr. and Mrs. Donald L. Boyd  
 Mr. David Braun  
 Mr. and Mrs. G. Wayne Brazil  
 Mr. and Mrs. Thomas Brogan  
 Mr. and Mrs. Robert C. Brown  
 Mr. and Mrs. Robert B. Brown  
 Mr. Harry M. Brown  
 Mr. and Mrs. Steven L. Browning  
 Dr. and Mrs. Elwyn Buche  
 Mr. and Mrs. Claude E. Bulger  
 Mrs. LaShawn Butler  
 Mr. and Mrs. Allen S. Buzard  
 Miss Autumn N. Buzzell  
 Mrs. Ann R. Campbell  
 Ms. Valerie S. Cano  
 Mrs. Julia K. Chandler  
 Mr. Thomas M. Chavez  
 Mr. and Mrs. David M. Chavez  
 Ms. Annita Chittick  
 Mr. Kirk M. Chittick  
 Mr. and Mrs. Mark A. Chitwood  
 Drs. Sung Hwan and Sung Wan Cho  
 Mrs. Yeon Suk Chung  
 Mr. and Mrs. Keith Clawson  
 Mr. and Mrs. Kenneth A. Clement  
 Mr. and Mrs. Daniel M. Coan  
 Mr. and Mrs. Douglas D. Collins, Jr.  
 Mr. and Mrs. Billy D. Collins  
 Mr. and Mrs. Tyler J. Colson  
 Mr. and Mrs. Brent Copenhaver  
 Mr. and Mrs. Joseph L. Costa  
 Dr. and Mrs. David Creech

Mr. and Mrs. Thomas L. Cummings  
 Mr. and Mrs. Derek Cunningham  
 Mr. and Mrs. Ronald B. Cushing  
 Col. and Mrs. Paul Daly, Jr.  
 Ms. Carol L. Davidson  
 Mrs. Leticia B. Davis  
 Mr. James M. Dempsey  
 Ms. Suzanne DiPerno  
 Mr. and Mrs. Howard R. Dodd  
 Dr. and Mrs. Warren Doerfler  
 Mr. and Mrs. Forrest A. Doolittle  
 Ms. Charlotte Dorris  
 Mr. and Mrs. Monte Downing  
 Mr. and Mrs. Larry C. Droke  
 Mr. and Mrs. David Duke  
 Mrs. Toni C. Dunning  
 Mrs. Lorraine I. Dupray  
 Mr. and Mrs. Bradley R. Dupray  
 Mr. and Mrs. Thomas J. Edgington  
 Ms. Eva J. Eggen  
 Mr. and Mrs. Arvel R. Eicher, Jr.  
 Mr. and Mrs. Butch M. Ellis  
 Mrs. Patricia A. Emmert  
 Mrs. Gayle A. Emmons  
 Mr. and Mrs. Bob Ewing  
 Miss Claudia B. Faison  
 Mrs. Winogene W. Fenn  
 Mrs. Gladys R. Fenton  
 Mr. and Mrs. Francis M. Fields  
 Ms. Faye A. Filby  
 Miss Amylia M. Fisk  
 Mr. and Mrs. Ronald W. Fleeer  
 Mr. and Mrs. Evan L. Foote  
 Mrs. Diane L. Fowks  
 Mr. and Mrs. Warren Fowler  
 Mr. and Mrs. Roland M. Fox  
 Ms. Fabiola T. Francois  
 Ms. Christine Franzen  
 Ms. Marlin L. Frechette  
 Mrs. Sherry L. French  
 Mr. and Mrs. Allen L. Gallaway  
 Mr. and Mrs. Joseph J. Galligan  
 Mr. and Mrs. Keith L. Garrett  
 Dr. and Mrs. Christopher B. Gillette  
 Mrs. Alice D. Glass  
 Ms. Maryan Glimpse  
 Mr. and Mrs. David Gonzalez  
 Mr. and Mrs. Timothy M. Gooszen  
 Mrs. Cheryl L. Graham  
 Mr. and Mrs. Raouf A. Guirguis  
 Mr. and Mrs. Michael J. Gunnar  
 Mr. Ki Jong Ha  
 Mr. and Mrs. William L. Haley  
 Ms. Ruth E. Hall  
 Mr. and Mrs. John I. Hamilton  
 Mrs. Gertrude R. Hanson  
 Mr. and Mrs. Willard T. Harris  
 Miss Julie M. Harrison  
 Mr. and Mrs. William E. Harrison  
 Ms. Virginia M. Haskell  
 Ltc Ret. Helen L. Henley  
 Mr. and Mrs. David T. Higgins  
 Mr. and Mrs. Stuart B. Hindemit  
 Mr. and Mrs. Nick L. Hoban  
 Mr. and Mrs. Nicholas Hoban  
 Mr. and Mrs. Douglas W. Hodges  
 Mr. and Mrs. Brian Holm

Mr. David A. Hood  
 Mrs. Myra K. Hoover  
 Mr. and Mrs. Rodney C. Hoschouer  
 Ms. Carol House  
 Mrs. Donna E. Huffmyer  
 Mr. and Mrs. Robert J. Huhn  
 Mr. and Mrs. Robert K. Hurley  
 Ms. Rebecca J. Jacobsen  
 Mr. Dene M. Johnson  
 Mr. and Mrs. Gregory H. Johnson  
 Mrs. Ann Johnson Bolton  
 Mr. and Mrs. Michael V. Jolly  
 Mr. and Mrs. James S. Julian  
 Mr. and Mrs. David T. Keeton  
 Mr. and Mrs. Phillip Kelley  
 Mr. and Mrs. Howard J. Kelsey, Jr.  
 Ms. Susan Khoenle  
 Mr. and Mrs. Nilan L. Kincaid  
 Mr. and Mrs. Edmond G. Kirby  
 Ms. Elizabeth J. Kirkbride  
 Mr. and Mrs. Tim Kistler  
 Mr. and Mrs. Dennis Kitch  
 Mr. and Mrs. Kevin Kott  
 Dr. and Mrs. Mark S. Krause  
 Mr. and Mrs. Randy R. Kreiling  
 Mr. and Mrs. Norman L. Kross  
 Dr. and Mrs. Robert D. Kuest  
 Mr. and Mrs. William C. Kummert  
 Ms. Heanh S. Kung  
 Mrs. Francisca Kurowski  
 Mr. and Mrs. Young J. Kwon  
 Mr. and Mrs. Anthony R. La Farge  
 Mr. and Mrs. Donald F. Laing  
 Ms. Camille Lampert  
 Mr. and Mrs. Michael P. Larkin  
 Mr. and Mrs. Robert E. Lasiter  
 Mrs. Betty Laughlin  
 Mr. David B. Lawrence  
 Mrs. Carol E. Lawrence  
 Mr. and Mrs. Donald A. Lawrence  
 Mr. and Mrs. James Lawrence  
 Mr. Frank M. Lee  
 Miss Cassandra A. Lewein  
 Mr. and Mrs. Timothy Linn  
 Mr. and Mrs. Daniel R. Londen  
 Mr. Howard Longballa  
 Dr. Donna P. Louk  
 Mr. Michael J. Love  
 Mrs. Ava Lee Magadan  
 Mr. and Mrs. Jay A. Mahan  
 Mr. and Mrs. Gene J. Marinacci  
 Mr. and Mrs. Joseph L. Markum  
 Mr. and Mrs. Donald C. Marsh  
 Mr. and Mrs. Scott T. Martin  
 Mr. and Mrs. Derek G. Mason  
 Mr. and Mrs. Wesley C. Mason  
 Mr. Christopher K. Mathaga  
 Mr. and Mrs. Richard D. Mathis  
 Mr. and Mrs. Bruce Mauerhan  
 Mr. and Mrs. Mike Maxson  
 Mr. Mark A. May  
 Mr. and Mrs. Keith Mc Calment  
 Ms. Teri L. McKeating  
 Mrs. Aja A. McKee  
 Mr. and Mrs. John F. McMahan  
 Mr. and Mrs. Glen A. McWherter  
 Mr. and Mrs. Kurtis McWilliams

Mr. and Mrs. Fred Mendez  
 Ms. Barbara L. Merkle  
 Mr. and Mrs. Charles A. Mhlbauer  
 Ms. Rachel P. Miles  
 Mrs. Sue E. Monarch  
 Mr. and Mrs. Kenneth Monson  
 Mrs. Raymona L. Montgomery  
 Mrs. Eula F. Moore  
 Mr. and Mrs. Stephen E. Moore  
 Mr. Steven Moore  
 Miss Rebecca Moreno  
 Mr. Gregory J. Morris  
 Mr. and Mrs. Hadley F. Morrison  
 Mr. and Mrs. Dan J. Moss  
 Mr. and Mrs. Kenneth R. Murphy  
 Mr. Ronald D. Murray  
 Miss Ioana D. Nastase  
 Dr. Farrell F. Neeley  
 Mr. and Mrs. Martin E. Neese  
 Mr. and Mrs. Nicholas Neilson  
 Mrs. Anna Ruth Netting  
 Mrs. Thuy T. Nguyen  
 Miss Sharon R. Nicholson  
 Mr. and Mrs. Joe P. Nix, Jr.  
 Mr. and Mrs. Allen L. Norton  
 Mr. and Mrs. David M. Norton  
 Mr. and Mrs. Timothy J. Odle  
 Mr. and Mrs. Robert O'Donnell  
 Mrs. Maria R. Olivares  
 Mrs. Sandra L. Oravetz  
 Mr. and Mrs. Robert J. Ourada  
 Mr. Bradley T. Overholser  
 Mr. and Mrs. Gregory E. Pappas  
 Mr. and Mrs. Delmar U. Parks  
 Mrs. Beverly A. Parr  
 Mr. and Mrs. Don Paulsen II  
 Mr. and Mrs. Thomas M. Pendergrass  
 Mr. and Mrs. Mark N. Peterson  
 Mr. and Mrs. Roger C. Peterson  
 Mrs. Gertrude F. Peterson  
 Mr. and Mrs. Steve Phillips  
 Mr. and Mrs. Ronald L. Phillips  
 Mrs. Veronica F. Phillips  
 Miss Jody L. Pierce  
 Mr. Craig D. Pillow  
 Mr. and Mrs. Aris Pologeorgis  
 Mr. and Mrs. Bret Potts  
 Dr. and Mrs. James W. Price  
 Mr. and Mrs. Dannie R. Prince  
 Mr. Michael J. Putrah  
 Mr. Damian R. Raffele  
 Mr. and Mrs. Lester W. Ragland  
 Mr. and Mrs. Chad M. Rath  
 Mrs. Michele M. Raymond  
 Ms. Ella Mae Record  
 Mr. and Mrs. Sydney N. Reitz  
 Mr. and Mrs. Robert L. Resner  
 Mr. and Mrs. Donald R. Rice  
 Dr. William J. Richardson  
 Mr. and Mrs. J.H. Richey  
 Mr. and Mrs. Robert W. Riggan  
 Mrs. Cheryl K. Riley  
 Mr. and Mrs. Donald L. Roberts  
 Mr. and Mrs. Perry Rubin  
 Mr. Glen F. Rudy  
 Mr. and Mrs. Glenn A. Russell  
 Mr. Joseph A. Russo

Mr. Christopher A. Salerno  
 Mr. and Mrs. G. Loren Sangree  
 Mr. Jeff Sankey  
 Mr. and Mrs. David W. Schaad  
 Mr. and Mrs. Frank W. Schattner  
 Miss Cara E. Schenk  
 Mr. and Mrs. David M. Schoch  
 Mrs. Sharon Schultz  
 Mr. and Mrs. John Shaddy  
 Mr. Dee Shaffer  
 Mr. Binish P. Shah  
 Mr. and Mrs. Charles L. Shelby  
 Ms. Kathleen J. Shelley  
 Ms. Suzanne E. Shirk  
 Ms. Cheryl L. Shoats  
 Mr. and Mrs. Garth D. Shreading  
 Mr. and Mrs. David E. Sill  
 Mr. and Mrs. Donald Slauson  
 Mr. and Mrs. David G. Smith  
 Mrs. Daffany D. Smith  
 Miss Karen I. Soriano  
 Mrs. Samantha A. Sovern  
 Ms. Elizabeth B. P. Sperry  
 Mr. Erik J. Stauber  
 Mr. Jonathan C. Stone  
 Mr. and Mrs. Steven Strem  
 Mr. and Mrs. Dean Strong  
 Mr. and Mrs. James W. Swaney  
 Mrs. Janet M. Tamble  
 Dr. and Mrs. Clark H. Tanner  
 Dr. and Mrs. Peter V. Tasaka  
 Mr. and Mrs. Jeffery Taylor  
 Mr. Daniel M. Taylor  
 Mr. and Mrs. John Teberg  
 Mr. Coby J. Tefft  
 Mr. and Mrs. James O. Thomas  
 Mr. and Mrs. Jeff R. Thompson  
 Mr. and Mrs. Jack M. Tomlin  
 Mr. Deric A. Unoura  
 Mr. and Mrs. Joseph B. Vail  
 Mrs. Michelle A. Van Dalsem  
 Mr. and Mrs. John G. Varela  
 Mr. Michael Varley  
 Ms. Carol A. Veatch  
 Mr. and Mrs. Jaime L. Velaszuez  
 Mr. Jeff Vines  
 Mr. and Mrs. Randy A. Wambold  
 Ms. Carol Ward  
 Mr. and Mrs. Sylvester Warsaw  
 Mr. Jeffrey L. Watson  
 Mr. and Mrs. Johnnie L. Watterson  
 Mr. and Mrs. Phil Weideman  
 Mr. Peter Weitzner  
 Mr. and Mrs. George R. Welsh  
 Miss Stephanie M. Wenke  
 Mr. and Mrs. William G. West  
 Mr. and Mrs. Glenn A. Westerberg  
 Mr. and Mrs. Timothy J. White  
 Ms. Annette White  
 Mr. and Mrs. Steven M. Whitmer  
 Mrs. Maria D. Wienecke  
 Mrs. Pauline L. Wigger  
 Mr. and Mrs. Gary L. Williams  
 Mr. and Mrs. Christopher M. Williams  
 Mr. and Mrs. Michael R. Wilson  
 Mr. and Mrs. Steven O. Winger  
 Mr. and Mrs. John B. Wissler

Mr. and Mrs. Steven T. Wood  
 Mr. and Mrs. Leroy Wood  
 Mr. and Mrs. Stephen Worrell  
 Mr. and Mrs. Richard E. Worthington  
 Dr. Paul K. S. Yoon  
 Mr. and Mrs. Kevin Zahardt

### \$99 and Below

Mr. and Mrs. James Abeltin  
 Miss Cherelle S. Abeyta  
 Mr. and Mrs. Jerry Acton  
 Ms. Diane Aguayo  
 Mr. and Mrs. Eric Ahlberg  
 Mr. Efrain Alcalá  
 Ms. Joyce L. Allan  
 Mr. and Mrs. Eddie D. Allen  
 Mr. Jeffrey L. Allen  
 Mr. Kevin Allmendinger  
 Mrs. Monica Alonzo  
 Miss Micah N. Alston  
 Mr. Gustavo Alvarez  
 Mr. Mark A. Andrews  
 Mr. Ernest Angel  
 Mr. and Mrs. Charles R. Augenstein  
 Mr. and Mrs. Joseph V. Bahash  
 Mr. and Mrs. Robert Baltodano  
 Mr. and Mrs. Mathew A. Barnett  
 Mr. and Mrs. Curtis W. Batchelder  
 Ms. Julia E. Bates  
 Mr. and Mrs. Donald Bean  
 Dr. and Mrs. Roger S. Beard  
 Mrs. Coralie Beard  
 Mrs. Mary Ann Beliakoff  
 Mr. and Mrs. Bruce V. Benson  
 Miss Suzanne E. Benton  
 Mr. and Mrs. Clarence N. Berger  
 Mr. Michael Berryman  
 Mr. and Mrs. Blake J. H. Biery  
 Mr. and Mrs. Ken Bishop  
 Mr. and Mrs. Donald D. Boesel  
 Mr. and Mrs. Dave Bogan  
 Mr. and Mrs. William P. Booser  
 Ms. Elsie M. Boyd  
 Mrs. Gale Brandt  
 Ms. Marilyn D. Brenden  
 Mr. Henry J. Briones  
 Mr. and Mrs. Steven W. Broome  
 Mr. Robert H. Buskirk  
 Mr. and Mrs. Tim Butts  
 Ms. Evangelina R. Cabug  
 Mrs. Daniele V. Calderon  
 Mrs. Martee Camarillo  
 Mrs. Olga Cammer  
 Ms. Heather Campbell  
 Ms. Abigail D. Cano  
 Ms. Wanda Carey  
 Mr. and Mrs. Paul Carl  
 Mr. Daniel Carrier  
 Mr. Michael Carter  
 Mr. and Mrs. K. LaVern Carter  
 Mrs. Betty M. Casebier  
 Mr. Mel A. Caudillo  
 Mr. and Mrs. Kevin L. Chavez  
 Mr. and Mrs. Timothy Chell  
 Ms. Ada L. Clapsaddle  
 Miss Tiffany L. Clark

Mr. and Mrs. Bob J. Clark  
 Mr. and Mrs. Lawrence Clasen  
 Mr. and Mrs. Robert C. Coleman  
 Mr. and Mrs. Robert E. Conklin  
 Mr. Colin R. Connors  
 Mr. and Mrs. Darren Conway  
 Dr. and Mrs. Lind W. Coop  
 Mr. and Mrs. Larry Cooper  
 Mr. Frank A. Cosindas  
 Mr. and Mrs. Paige E. Craig  
 Ms. Nancy A. Crawford  
 Mr. and Mrs. Jeff Crockett  
 Mr. and Mrs. David Croy  
 Mr. Jose Cruz  
 Miss Kelly D. Dagley  
 Mr. Bill I. Dairy  
 Mr. and Mrs. Robert K. Daughrity  
 Mr. and Mrs. Dane D. Davis  
 Mr. and Mrs. James E. Davis  
 Mrs. Linda L. Dick  
 Mr. and Mrs. Karl H. Dimler  
 Mr. and Mrs. Jason S. Douros  
 Mr. Minard C. Duncan  
 Mr. and Mrs. Gregg K. Dutton  
 Mr. Finnian O. Ebuehi  
 Mr. and Mrs. Robert Eckhoff  
 Miss Kayleen R. Edgington  
 Mrs. Kristin J. Eitland  
 Ms. Kathryn C. Elliot  
 Ms. Amanda Elliott  
 Miss Melissa A. Ellison  
 Mr. and Mrs. John P. Enabnit  
 Mr. and Mrs. Xavier A. Escareno  
 Mr. Tom Estes  
 Mr. and Mrs. David D. Estrada  
 Mr. and Mrs. Robert T. Federighi  
 Ms. Andrae Fernandez  
 Mr. Matthew R. Fike  
 Mr. Victor F. Fimbres  
 Mr. Daniel Flores  
 Ms. Sarah Foster  
 Miss Jennifer E. Fowler  
 Ms. Rhonda L. France-Peralta  
 Dr. and Mrs. Gregory Franklin  
 Mr. and Mrs. James R. Fremeau  
 Mrs. Barbara Fuller  
 Mr. and Mrs. Patrick Gabler  
 Mr. and Mrs. Bruce W. Gallaher  
 Mr. and Mrs. Albert Galvan  
 Ms. Irene Garcia-Lopez  
 Mr. and Mrs. James Gardner  
 Mr. and Mrs. Jimmy E. Gaston  
 Mr. and Mrs. Marc Gerdes  
 Ms. Roberta L. Germain  
 Mr. and Mrs. Keith A. Gibbons  
 Dr. and Mrs. Charles N. Gibbs  
 Dr. and Mrs. Glen A. Gibson  
 Mr. and Mrs. Zachary A. Gibson  
 Mrs. Laura G. Glenn  
 Dr. and Mrs. Richard A. Gohl  
 Mr. and Mrs. Ronald Goodnoe  
 Mr. and Mrs. Michael T. Goodrich  
 Mrs. Lynda S. Gooszen  
 Mrs. Lou Ceil Gordon  
 Mr. and Mrs. Joseph H. Gravitt  
 Mrs. Yvon Gresser  
 Mr. and Mrs. James Grisham

Mr. Dave Grossman  
 Mr. and Mrs. Richard K. Gunn  
 Mr. and Mrs. Robert Hallback  
 Mr. and Mrs. David Hamilton  
 Ms. Patricia A. Harris  
 Mrs. Debbie L. Harris  
 Mr. and Mrs. Eugene M. Hartman  
 Miss Susan L. Hastings  
 Mr. and Mrs. Robert L. Hayhurst  
 Mr. Eric L. Hecox  
 Mrs. Chana Hershberger  
 Mr. and Mrs. Jason P. Hewitt  
 Mrs. Cynthia L. Hofferth  
 Mr. Mikel Homa  
 Mrs. Marsha Hood  
 Mr. and Mrs. Kerry P. Hookstra  
 Mr. and Mrs. Robert W. Hospodarec  
 Mrs. Nancy C. Houser  
 Mr. and Mrs. Warren R. Howard  
 Mr. Stephen E. Hudson  
 Mr. Jason G. Huffman  
 Mrs. Barbara Huttinger  
 Miss Lisa M. Igram  
 Ms. Alma L. Islas  
 Mr. Paul F. Jaramillo  
 Mr. Gary Johnson  
 Ms. Velma A. Jones  
 Miss Sarah E. Jones  
 Ms. Edna Karinski  
 Mr. Robert A. Keller  
 Charles D. Kelly  
 Ms. Kendra N. Kennedy  
 Mr. and Mrs. Valentinus H. Kim  
 Miss Sarah N. Kimakwa  
 Mr. and Mrs. Steven King  
 Mr. and Mrs. Timothy Kling  
 Mrs. Ruth Kolb  
 Mr. and Mrs. Nicholas Koranda  
 Mr. and Mrs. Ron Krenzin  
 Mr. and Mrs. Henry C. Kugel  
 Ms. Carol J. Lacruz-Yudice  
 Mr. and Mrs. Donald L. Lamoureux  
 Mr. and Mrs. Michael Larson  
 Mr. Robert J. Lassetter  
 Mr. and Mrs. James Le Gros  
 Mr. Jack L. Lease  
 Mr. Jin Hyung Lee  
 Mr. Chas A. Lehman  
 Mr. and Mrs. Lester L. LeMay  
 Mr. and Mrs. Roy B. LeQuire  
 Mr. and Mrs. Russell L. Levine  
 Ms. Michelle Lewis  
 Mrs. Marisela Linares  
 Mr. and Mrs. Mark Lindell  
 Mr. and Mrs. John Lister  
 Mr. and Mrs. David M. Little  
 Mr. and Mrs. John E. Loera  
 Mrs. Katherine B. Lomheim  
 Miss Lillian Lopez  
 Mr. and Mrs. Christopher E. Lovato  
 Mr. and Mrs. Mike Luzzi  
 Mr. and Mrs. Kipp M. Lyons  
 Mr. and Mrs. John MacArthur  
 Mr. and Mrs. Roberto Maciel  
 Ms. Midge F. Madden  
 Mr. and Mrs. Michael J. Maiolo  
 Mr. and Mrs. Joseph A. Maiolo

Mrs. Jennifer A. Manavi  
 Mr. and Mrs. Jack Manjikian  
 Ms. Cyndie Marksbury  
 Mr. and Mrs. Gerald C. Marley  
 Mrs. Susan D. Martin  
 Mr. Ray L. Martindale  
 Mr. and Mrs. John R. Mason  
 Mr. and Mrs. Jimmy M. Mata  
 Mr. and Mrs. William McArthur  
 Mrs. Marilyn M. McBride  
 Mr. and Mrs. John McBride  
 Mr. and Mrs. Matthew S. McCann  
 Mr. and Mrs. Andrew McCardell  
 Mr. and Mrs. Lee McClanathan  
 Mr. and Mrs. Edward F. McCravy  
 Mr. and Mrs. Mark McKee  
 Mr. Paul and Dr. Dorothy McKowen  
 Mr. and Mrs. Paul McMurtrie  
 Mr. and Mrs. Gustavo Melchor  
 Mr. Robert Mercado  
 Mr. and Mrs. Greg Merget  
 Ms. Marion D. Messier  
 Mrs. Diana Metzger  
 Mrs. Anne Meyer  
 Mr. Mark S. Miller  
 Miss Katrina I. Miller  
 Mr. Leroy B. Mills  
 Mrs. Cristal L. Misplay  
 Mrs. Lisa S. Moises  
 Mrs. Diane Y. Moore  
 Mrs. Dorothy L. Moose  
 Mrs. Myriam S. Morgan  
 Mr. and Mrs. Ronald D. Mumford  
 Mr. and Mrs. Kenneth S. Murphy  
 Ms. Gloria J. Nelson  
 Mr. and Mrs. William G. Nelson  
 Mr. and Mrs. Bob Newman  
 Mr. and Mrs. Timothy Newton  
 Mr. and Mrs. William E. Nichols  
 Mrs. Grace O. Nix  
 Mrs. Carolyn R. Noble  
 Ms. Eufronia Olayon  
 Mrs. Patricia M. Olgin  
 Mr. Charles Ortiz  
 Mr. and Mrs. Dennis M. Pagenkopp  
 Mr. and Mrs. George Paguyo  
 Mr. and Mrs. Robert Palacios  
 Mrs. Christine D. Paquette  
 Mr. Keesan Park  
 Mr. and Mrs. George Parker  
 Mr. and Mrs. David Parker  
 Mr. and Mrs. Gregory P. Patterson  
 Mr. and Mrs. Harley J. Patterson  
 Mr. and Mrs. Lee Penrice  
 Mrs. Deborah L. Perales  
 Mr. Leonard J. Peterson  
 Mr. and Mrs. Charles L. Pillsbury  
 Ms. Lisa R. Pownall  
 Mrs. Trinidad Preciado  
 Mr. and Mrs. Alan N. Rabe  
 Ms. Patrice R. Ragland  
 Mrs. Nariman N. Rahmon  
 Ms. Carol Ramsay  
 Ms. Marilyn S. Ransberger  
 Miss Jody A. Rediger  
 Ms. Diane E. Reed  
 Mr. and Mrs. Kristopher C. Richardson

Mrs. Kitty Rivers  
 Mr. and Mrs. Robert Robertson  
 Mr. and Mrs. H D. Robertson  
 Mr. and Mrs. Lance M. Robillard  
 Mr. and Mrs. George M. Robillard  
 Mr. and Mrs. Jorge Rodriguez  
 Mr. and Mrs. Juan I. Rosales  
 Dr. and Mrs. Richard A. Rose  
 Mr. and Mrs. David E. Rothman  
 Mr. and Mrs. Jimmy Ruff  
 MSgt. Ret. and Mrs. John C. Russi  
 Mr. and Mrs. Johnny Salazar  
 Mrs. Amparo V. Saldivar  
 Mr. and Mrs. Jim Sanchez  
 Mr. and Mrs. Barrie D. Sandy  
 Mrs. Lisa S. Santiago  
 Ms. Norma C. Santos  
 Mr. John K. Saunders  
 Mrs. Ceola Schmidt  
 Mr. Rene C. Schneider  
 Mrs. Barbara J. Schubert  
 Mr. and Mrs. Joel B. Schubert  
 Mr. John C. Schultz  
 Mr. Bob Scott  
 Mr. and Mrs. Ronald Scott  
 Mr. and Mrs. Donald B. Sharpe  
 Mr. Paul Shin  
 Miss Cassandra J. Shoaf  
 Mr. Philip R. Slocum  
 Ms. Beverlee J. Smith  
 Mr. and Mrs. Philip R. Smith  
 Ms. Linda Snell  
 Mr. and Mrs. Robert Snyder  
 Ms. Marilyn L. Snyder  
 Mrs. Sharon K. Sparks  
 Ms. Fran Spencer  
 Mr. and Mrs. James R. Speth  
 Mrs. Caroline M. Spingath  
 Mr. and Mrs. Ron Stanley  
 Mr. Craig and Dr. Laura Steele  
 Mr. and Mrs. Charles A. Story  
 Mr. and Mrs. Allan Strand  
 Mr. and Mrs. Keith R. Strodl  
 Mr. Michael Svoboda  
 Dr. Kevin K. Tanaka  
 Mr. and Mrs. Jon D. Taylor  
 Mr. Wade R. Terry  
 Ms. Dorothy M. Thomas  
 Mr. and Mrs. Roger Thompson  
 Mrs. Susan D. Tinderholt-Szuch  
 Mr. and Mrs. Phillip J. Todd  
 Ms. Ashley Travis  
 Mr. M. J. Treguboff  
 Mrs. Eleanor Tse  
 Miss Altanzaya Tserendondov  
 Mrs. Ruby L. Turner-Richards  
 Mr. Robert E. Urbanek  
 Dr. and Mrs. William L. Vail  
 Mr. and Mrs. Jaime Q. Velasquez  
 Mr. and Mrs. Jaime L. Velasquez  
 Mr. and Mrs. Ramiro Venegas  
 Ms. Adelle M. Wagner  
 Mr. and Mrs. Grant E. Walker  
 Mrs. Marcia C. Walters  
 Mr. Matthew Walton  
 Mr. and Mrs. Claude A. Wambold  
 Mr. and Mrs. Thomas L. Wegner

Mr. Steve S. Welch  
 Mr. and Mrs. Thomas W. Whitmer  
 Mrs. Marjorie Y. Williams  
 Mr. and Mrs. David Williams  
 Mr. and Mrs. Jeremy S. Wilson  
 Dr. and Mrs. A. Edward Wolfe  
 Mr. and Mrs. Ted Worrell  
 Mr. and Mrs. Daniel T. Ybarra  
 Mr. Dennis K. Yee  
 Mr. Douglas J. Yost  
 Ms. Roxanne Young  
 Mr. William R. Zogg

## CHURCHES

### *Contributions given to the Annual Fund.*

#### **Above \$30,000**

Del Amo Christian Church, Torrance, CA  
 Cypress Avenue Christian Church,  
 Carmichael, CA  
 First Christian Church, Huntington Beach,  
 CA

#### **\$20,000 - \$29,999**

Central Christian Church of the East Valley,  
 Mesa, AZ  
 University Christian Church, Los Angeles,  
 CA

#### **\$10,000 - \$19,999**

Camarillo Christian Church, Camarillo, CA  
 Canyon Ridge Christian Church, Las Vegas,  
 NV  
 Christ's Church of Flagstaff, Flagstaff, AZ  
 Discovery Christian Church of Moreno Valley,  
 Moreno Valley, CA  
 First Christian Church, Yuma, AZ

#### **\$5,000 - \$9,999**

Chandler Christian Church, Chandler, AZ  
 Christ's Church of the Valley, Peoria, AZ  
 Christ's Church of the Valley, Covina, CA  
 Community Christian Church, Hemet, CA  
 Eastside Christian Church, Fullerton, CA  
 First Christian Church of Newbury Park,  
 Newbury Park, CA  
 First Christian Church of Thousand Oaks,  
 Thousand Oaks, CA  
 Mission Viejo Christian Church, Mission  
 Viejo, CA  
 Northside Christian Church, Clovis, CA  
 Parkcrest Christian Church - Heartwell  
 Campus, Long Beach, CA  
 Parkway Christian Church, Surprise, AZ  
 Shepherd of the Hills, Porter Ranch, CA

#### **\$2,500 - \$4,999**

First Christian Church of Anaheim,  
 Anaheim, CA  
 Knott Avenue Christian Church, Anaheim,  
 CA

Diamond Canyon Christian Church,  
 Diamond Bar, CA  
 Christ's Church of the Valley, Bakersfield, CA  
 Lighthouse Christian Church, Oceanside, CA  
 West Valley Christian Church, West Hills, CA

#### **\$1,000 - \$2,499**

Chaparral Christian Church, Scottsdale, AZ  
 Christian Church of Lemon Grove, Lemon  
 Grove, CA  
 Community Christian Church, Apache  
 Junction, AZ  
 Creekside Christian Fellowship, Irvine, CA  
 Gold Coast Christian Church, Oxnard, CA  
 Inglewood Southside Christian Church,  
 Inglewood, CA  
 LifeBridge Christian Church, Longmont, CO  
 New Hope Community Church, Lancaster,  
 CA  
 Newberg Christian Church, Newberg, OR  
 Norco Christian Church, Norco, CA  
 Pomerado Christian Church, Poway, CA  
 Santee Christian Church, Santee, CA  
 Seaside Christian Church, Warrenton, OR  
 St. Johns Christian Church, Portland, OR  
 Suburban Christian Church, Corvallis, OR  
 Venture Christian Church, Murrieta, CA  
 Victor Valley Christian Church, Hesperia,  
 CA  
 Westwood Hills Christian Church, Los  
 Angeles, CA  
 Willamette Christian Church, West Linn,  
 OR

#### **\$500 - \$999**

Christ's Church of the Valley, Palmdale, CA  
 Colton Christian Church, Colton, CA  
 Community Christian Church of the  
 Foothills, Tujunga, CA  
 Crosspoint Christian Church, Glendale, AZ  
 East Anaheim Christian Church, Anaheim,  
 CA  
 East Hills Christian Church, El Cajon, CA  
 First Christian Church, Canyon Country, CA  
 First Christian Church of Victorville,  
 Victorville, CA  
 Golden West Christian Church, Los Angeles,  
 CA  
 Hidden Valley Christian Church, Escondido,  
 CA  
 Lake Sawyer Christian Church, Black  
 Diamond, WA  
 Mountain View Christian Church, Phoenix,  
 AZ  
 Needles Christian Church, Needles, CA  
 North Towne Christian Church, Pomona, CA  
 Plaza Christian Church, Bakersfield, CA  
 Rosemead Christian Church, Rosemead, CA

#### **\$100 - \$499**

Christian Women's Fellowship, Bend, OR  
 Crossroads Christian Church, Vacaville, CA  
 Dinuba Christian Church, Dinuba, CA  
 Park Avenue Christian Church, Montebello,  
 CA

## \$99 and Below

Downey First Christian Church, Downey, CA

## CHURCHES

*Contributions given for a restricted purpose including designated scholarships and church scholarships.*

## Above \$30,000

Cypress Avenue Christian Church,  
Carmichael, CA

First Christian Church, Yuma, AZ

## \$20,000 - \$29,999

Canyon Ridge Christian Church, Las Vegas,  
NV

First Christian Church, Huntington Beach,  
CA

## \$10,000 - \$19,999

Christ's Church at the Crossroads, Anthem,  
AZ

Tigard Christian Church, Tigard, OR

## \$5,000 - \$9,999

Cabo English Church, Inc, San Juan  
Capistrano, CA

Christ Presbyterian Church, Edina, MN  
Knott Avenue Christian Church, Anaheim,  
CA

North Orange Christian Church, Orange, CA  
Oak Park Christian Church, Grover Beach,  
CA

Shepherd of the Hills, Porter Ranch, CA

## \$2,500 - \$4,999

Central Christian Church of the East Valley,  
Mesa, AZ

Cherry Hills Community Church, Highlands  
Ranch, CO

Desert Christian Fellowship, Phoenix, AZ  
Gladstone Christian Church, Gladstone, OR  
Kindred Community Church, Anaheim Hills,  
CA

Kingsway Christian Church, Avon, IN  
Legacy Christian Church, Overland Park, KS  
Lincoln Heights Christian Church, Phoenix,  
AZ

Mission Viejo Christian Church, Mission  
Viejo, CA

Mountainview Community Christian Church,  
Highlands Ranch, CO

Vietnamese Alliance Church, Inc, Midway  
City, CA

Windsor Road Christian Church,  
Champaign, IL

## \$1,000 - \$2,499

Canby Christian Church, Canby, OR  
Chaparral Christian Church, Scottsdale, AZ  
Christ's Church of Flagstaff, Flagstaff, AZ  
Christ's Church of the Valley, Peoria, AZ  
Downey First Christian Church, Downey, CA  
Friendship Baptist Church, Yorba Linda, CA  
North Plains Christian Church, North  
Plains, OR

Rock Harbor Church, Costa Mesa, CA  
Seaside Christian Church, Warrenton, OR  
Sunny Hills Church of Christ, Fullerton, CA  
Westwood Hills Christian Church, Los  
Angeles, CA

## \$500 - \$999

Christ's Church of the Valley, Bakersfield, CA  
Mountainview Christian Church, Gresham,  
OR

Nachimban Church, Buena Park, CA  
Redwood Christian Church, Grants Pass,  
OR

Sa-Rang Community Church of Southern  
California, Anaheim, CA

## \$100 - \$499

Calvary Christian Church, Bellievue, NE  
Christ's Church of the Valley, Covina, CA  
Diamond Canyon Christian Church,  
Diamond Bar, CA

Discovery Christian Church of Moreno  
Valley, Moreno Valley, CA

First Christian Church of Florissant,  
Florissant, MO

Oakley Christian Church, Oakley, KS  
Parkcrest Christian Church - Heartwell  
Campus, Long Beach, CA

Venture Christian Church, Murrieta, CA

## \$99 and Below

Colton Christian Church, Colton, CA  
Grace Community Church of the Nazarene,  
Placentia, CA

New Hope Gospel Ministries, Torrance, CA

## ORGANIZATIONS & FOUNDATIONS

*Contributions given to all funds.*

## Above \$30,000

James L. Stamps Foundation

## \$10,000 - \$29,999

The Boeing Company Gift Matching  
Program

Emerson Network Power  
Motorola Foundation

## \$5,000 - \$9,999

Bank of America Foundation  
Johnson Controls  
Orangewood Children's Foundation  
Raytheon Company  
Shell Oil Companies Foundation  
Tumaini International Ministries

## \$2,500 - \$4,999

Arab World Ministries  
Arizona Community Foundation  
Colgate-Palmolive Company  
Eclectic Associates, Inc.  
Farmers and Merchants Bank  
Governor's Scholarship Programs  
Laurel House, Inc.  
Scholarship America  
State Farm Companies Foundation  
The Boeing Company Shared Services  
Group  
The Modglin Family Foundation  
Verizon Foundation/Verizon Volunteers  
World Witness  
Youth For Christ Seattle

## \$1,000 - \$2,499

Alexander Christian Foundation  
Bon Appetit Site 30041  
ChevronTexaco Matching Gifts Program  
Church Development Fund  
Edison International  
Former Agents of the FBI Foundation  
Hualalai Ohana Foundation  
Hugh and Hazel Darling Foundation  
Intermountain Bible College  
Kiwanis Club of Craig  
Muscoogee Creek Nation  
Parker Hannifin Foundation  
The Arthur J. Gallagher Foundation  
The Xerox Foundation  
Twentymile Coal Company  
Unilever United States Foundation, Inc.  
Wachovia Foundation  
Youth With A Mission

## \$500 - \$999

Choctaw Nation of Oklahoma  
Craig Association of Realtors  
Fullerton Rotary Foundation  
General Electric Foundation  
Horatio Alger Association  
Julia Pierson Trust  
ModrellCo Electric  
National Ministries  
NCH Wealth Advisors  
Nipomo High School Associated Student  
Body  
Roanoke Bible College  
Rotary Service Inc.  
Runza National Omaha Coop  
Transformation Ministries  
Tri-State Generation and Transmission  
Assoc., Inc.

**\$100 - \$499**

A.S.A.P. Paving, Inc.  
 Apple Valley High School ASB  
 Aries Pool Service  
 ASAP Paving, Inc.  
 AT&T Foundation  
 B.P.O.A. Bellevue Police Officers Association  
 Canyon Lake Woman's Club  
 Christian and Missionary Alliance  
 Crane Architectural Group  
 Fullerton Community Bank  
 Fullerton Repub.Wom.Federated  
 Hillside Hideaway, Inc.  
 M & M Well Service, LLC  
 Matyas Hunyadi Carpet & Flooring  
 OC International  
 Pacific High Reach & Equipment Services,  
 Inc.  
 PCWA  
 Pfizer Foundation  
 Pro-Screen Inc.  
 Rancho Valley Chevrolet, Inc.  
 Rice Fire Protection  
 Santa Fe High School Associated Students  
 The Baseball Academy, LLC  
 Tri County Pump Company  
 Wells Fargo Foundation

**\$99 and Below**

Complete Balance Chiropractic  
 G.E. Landscaping  
 Inland Carpet & Upholstery Cleaning  
 Peerless Inc.  
 Walter Robbs Callahan & Pierce Architects,  
 P.A.

**ESTATES*****Contributions given to all funds.***

Carl Bimson  
 Amber F. Bond  
 John Kilgore  
 Marjorie Naumann  
 Dolores Smith  
 Dorothy Wilhite

**TRIBUTES*****Contributions given to all funds.******In Memory of***

Edward J. Atkinson  
 Dennis Baker

Gerald S. Bash  
 William and Helen Beard  
 Harold G. Boyd  
 Dolly M Chitwood  
 Nancy A. Christensen  
 Bob and Leora Cox  
 Ida Duncan  
 Carl Dupray  
 Gordon R. Hahn  
 Kenneth C Hanson  
 David W. Harrison  
 Arnold Hassoldt  
 Patricia A. Mills  
 George D. Schwartz  
 Jeffrey M. Smith  
 Ronald R. Soderquist  
 Ollie and Zola Stiley  
 Timothy J. Telfer  
 Rena M. Thompson  
 Jeffrey L. Wilson

***In Honor of***

John R. Bradford  
 Russell Comeaux  
 Michael P. Fitzgerald  
 Jonathan R. Morse  
 Gary L. Scheer  
 Stephen W. Thompson  
 Albert E. Wolfe

**THE IRA CHARITABLE ROLLOVER IS BACK FOR 2009!**

The IRA Charitable Rollover is available to provide you a one-step, simple way to make an immediate gift to Hope International University. On October 3, 2008, the Emergency Economic Stabilization Act of 2008 was signed into law and extended expired tax incentives. This law encourages charitable giving by bringing back the IRA Charitable Rollover which facilitates certain donors making direct distributions to a qualified charity.

**How the IRA Charitable Rollover Benefits You**

- Individuals, age 70 1/2 and older, may direct distributions from an IRA to a qualified charity, like The University of Toledo Foundation.
- Transfer counts toward your required minimum distribution, provided you have not received your 2008 total required minimum distribution.
- Distribution does not generate taxable income or an income charitable tax deduction. Thus, you can benefit even if you do not itemize your tax deductions or if you live in a state that does not offer a charitable deduction for income tax purposes.
- The 1099-R from the IRA custodian notes to report the distribution on the federal tax return, but identify as a nontaxable distribution.
- You can choose to transfer any amount up to \$100,000 on or before December 31, 2009.
- You can designate your distribution for a specific purpose or fund, to fulfill a pledge, or as an unrestricted gift.

**Some Limitations to Consider**

- No income tax charitable deduction available for the distribution.

- Distribution available only from a traditional IRA or Roth IRA, not from other retirement plans, such as a 401(k), 403(b), or 457 plan.
- Distribution may not be used to fund a charitable gift annuity, charitable remainder trust, or to obtain goods or services, such as tickets to sporting or entertainment events.
- Distribution must be made directly to a qualified charity, not to the IRA owner.

**What You Can Do**

- Talk to your financial and tax advisors to determine if the IRA Charitable Rollover is advantageous for you.
- Instruct your IRA custodian to distribute any amount up to \$100,000 to Hope International University
- Advise us of your gift and how you choose to designate it. You will receive an acknowledgement letter from the University.
- Contact Leroy Fulton or John Rowe at 714-879-3901, extension 2305 if you need assistance or information about how to notify your IRA custodian. We can help you!

- August 15 - 19, 2009** New Student Orientation - Pacific Christian College
- August 31, 2009** Fall Trimester Begins - School of Graduate and Professional Studies
- October 16, 2009** Celebrate Hope Dinner - Disneyland Grand California Hotel
- November 7, 2009** Frontline Training Leaders for Student Ministry - "Influence Unleashed"
- December 5, 2009** Music Department Christmas Concert
- December 12, 2009** Fall Commencement - Lawson Fulton Student Center

**IF YOU WOULD LIKE TO MAKE A GIFT TO THE HIU SCHOLARSHIP FUND TODAY,  
PLEASE GO ONLINE TO [WWW.HIU.EDU/GIVING](http://WWW.HIU.EDU/GIVING)  
OR USE THE ENVELOPE PROVIDED IN THIS MAGAZINE.**

**hiu** HOPE INTERNATIONAL UNIVERSITY  
2500 E. Nutwood Avenue  
Fullerton, CA 92831

Non-Profit Org.  
U.S. Postage  
PAID  
Fullerton, CA  
Permit #403