



nebraskachristiancollege
CREATING CHURCH LEADERS

UNIFIED IN MISSION & PURPOSE
THE 2016 MERGER

CONTENTS

- 3 President's Perspective
- 4 History of HIU
- 6 History of NC
- 8 NC Campus Master Plan
- 10 Combined Global Impact
- 12 Strength in Numbers
- 13 Campus Snapshots
- 14 Academic Programs
- 15 Merger Process
- 16 Board of Trustees
- 18 President's Profile



Through the integration of faith, service, and learning, HIU & NC faculty and staff are dedicated to providing a transformative educational experience that prepares each student to serve the Church and impact the world for Christ.

PRESIDENT'S PERSPECTIVE

The starting point for any merger conversation between Nebraska Christian College (NC) and Hope International University (HIU) is our respective mission statements. You could substitute either one for the other and no one would object because both schools are committed to raising up leaders to serve churches and impact the world for Christ.

There are a number of differences, of course. One campus is urban, just a few blocks from a major freeway in Southern California, and the other is rural on a gravel road in Nebraska. HIU's school color is blue, NC's is red. Enrollment, academic majors, athletics, size of the campus, and other characteristics are unique, but what we have in common is far more important – and the key to a successful merger.

Reflecting on the past two years of this process, several key observations that come to mind.

1. The collaborative and cooperative spirit between the two schools was beyond what I ever anticipated. I believe that can be attributed to a key principle established at the outset. We agreed a merger must be in the best interest of both schools and committed to praying about the opportunity as we discerned the direction God was leading us.

Our conversations were honest and transparent and we weren't afraid to ask probing questions as we looked at the challenges of undertaking a venture of this nature. Respecting the heritage and organizational culture of each school was important to us, and we wanted to ensure our respective constituents that we were sensitive to the feelings of the people involved. We received overwhelming support that we were on the right track. When it came time to make the ultimate decision, the trustees of both schools voted unanimously to proceed.

2. The process is far more involved and requires much more work than most people realize. Not only do state and federal governments have regulations that must be met, but accrediting associations have developed an exhaustive process that includes preparing a comprehensive proposal with hundreds of pages of back-up documentation before they will consider giving their approval. Our goal was to be sure we had everything in order so when the accrediting team reviewed the proposal and conducted their on campus site visit, they would know we had given this decision proper due diligence.


It was encouraging when the final Western Association of Colleges and School regional accreditation report recommended to the Commission approval of the merger and included this statement: "HIU and NCC are to be commended for the foundation they have laid in identifying the risks and benefits, unique contributions of both institutions, and potential synergy from the merger; and for their commitment that both institutions are to benefit from the new structure."

3. Taking this step is a matter of Kingdom stewardship and critical to the future of Christian higher education in our respective regions. There has never been a time in the United States when we have encountered the kinds of changes that are taking place today in higher education. This environment requires that we consider how to ensure the sustainability of our schools. The future will look very different from the past fifty years and that should not be intimidating. Rather it should stimulate creative thinking and innovative responses to providing students with the best quality education and preparation for leadership in the church and society.

In looking to the future we are excited about many new opportunities this merger affords. For example, HIU has invested substantial resources over the past several years in developing online undergraduate and graduate programs that will now be available in the Midwest through NC. Also, NC has developed an impressive *Institute for Church Leadership* in which students serve in a church for one or two years as part of a competency-based academic program with practical training and one-on-one mentoring. Now we can begin to make this program available to our students in the Southern California region as well.

The HIU campus in Fullerton consists of eleven land-locked acres without much potential for expansion. The NC campus near Omaha is located in Papillion, NE, rated the second best small town in the United States. With eighty-five acres of land surrounded by new residential and corporate developments, NC will flourish as a vibrant part of that growing community.

Whatever the future holds, we remain committed to continuing the common mission that brought both HIU and NC into existence, and ask for your prayers on behalf of the thousands of students who are being prepared to make a positive impact in the world for Christ.


John Derry
President

A BRIEF HISTORY OF



Hope International University (HIU) was founded in 1928 as Pacific Bible Seminary, at the Alvarado Church of Christ in Los Angeles. Dr. George Rutledge, a nationally-known author and evangelist was selected as President ProTem, who was succeeded by Dr. A. Meldrum, former president of Spokane University.

The institution moved to First Christian Church, Long Beach, in 1930, Dr. George Taubman, a minister at FCC, was appointed Dean of the Seminary and Dr. James Hurst, minister of First Christian Church, Huntington Beach, was selected as the first official President.

Following an earthquake in 1933, Pacific Bible Seminary moved into a small home and, later, a remodeled apartment building, before purchasing a 2.5-acre plot in 1937. The Seminary broke ground in 1940 for a building that included offices and classrooms, which also functioned as library and chapel.

Dr. Kenneth A. Stewart assumed the presidency in 1954 and hired the first paid professors. New buildings were added: dormitories, a student center, and a library. In 1963, the name of the Seminary was changed to Pacific Christian College and it received accreditation from the American Association of Bible Colleges (AABC). The Western Association of Schools and Colleges (WASC) granted regional accreditation in 1969.

Student enrollment grew from 75 in 1954 to 185 in 1969, when Dr. Medford Jones became President. President Jones led the move in 1973 to the current campus in Fullerton. The 1970s brought a shift in emphasis toward the ministry of all Christians, which generated the expansion of academic majors, development of a graduate program, and opening extension programs in more than 20 off-campus locations.

Enrollment had increased to 398 students in 1981 when Knofel Staton became the College's fourth president. During the 1980s, the student body surpassed the 500 mark for undergraduates and doubled in out-of-state enrollments.

Dr. Leroy Lawson became President in 1990, beginning a decade of significant growth, as three new programs were added for adult and international learners: the graduate program expanded to include marriage and family therapy, business management, and education degrees. The institution became a member of the Council for Christian Colleges and Universities, and the purchase of an office building

complex nearly doubled the size of the original 11-acre campus. Enrollment exceeded 1,000 students for the first time in 1996, and in 1997, the Board of Trustees voted to become Hope International University organized into three schools: Pacific Christian College, The School of Professional Studies, and The School of Graduate Studies. The University joined the Golden State Athletic Conference of the National Association of Intercollegiate Athletics in 1998.

In August of 2003, the Trustees called Dr. John Derry to serve as the sixth president of Hope International University. His extensive experience and career in the area of Christian higher education were an ideal fit for HIU. (See profile on page 18.)

The Association for Biblical Higher Education granted programmatic accreditation of Bible and Ministry programs at the undergraduate and graduate levels in 2006. The purchase of an additional section of property on the south side of the campus made possible a new student housing opportunity; the University finalized a plan with a developer who purchased the southern 6.8 acres of the campus to construct student apartments that would accommodate up to 1,200 students. The School of Advanced Leadership Training (SALT) was established in 2007 to develop partnerships with local congregations in equipping emerging leaders for ministry.

The Marriage and Family Therapy Program received accreditation with COAMFTE in 2009, adult and graduate programs were relocated to facilities in Orange, the state of Washington approved HIU's Puget Sound Education Center to offer classes, and the University assumed responsibility for the Londen Institute for Evangelism and the Apostolic School of Theology, based in Sacramento.

The University organized its academic programming into five colleges in 2011: the College of Arts and Sciences, the College of Business and Management, the College of Education, Pacific Christian College of Ministry and Biblical Studies, and the College of Psychology and Counseling. The University also established a cooperative agreement with Dongseo University, a Christian Church university from Busan, Korea, to allow 100 students per year to study at HIU.

In the fall of 2013, the University relocated its graduate and online offices and the Hope Counseling Center to new facilities in Anaheim and approval was granted by WASC to offer online the University's teacher preparation program.



PACIFIC BIBLE SEMINARY, LOS ANGELES
CIRCA 1928



FULLERTON CAMPUS
PRESENT DAY

A BRIEF HISTORY OF

The **Nebraska Christian College** story began in 1944, when a small group of visionary leaders gathered in Wymore, Nebraska, to create a plan for a college that would prepare students to become Christian leaders who would serve the church, the community, and the world. The group included Guy B. Dunning, who would become the first President of the institution.

In the spring of 1945, Nebraska Christian College opened its doors in Norfolk, Nebraska, providing students with an experience of authentic Christian community where they could think biblically, communicate clearly, love compassionately, and lead courageously.

The school prospered and grew at a fast pace. To accommodate the growth, a fundraising campaign provided the resources for a new campus building that housed a chapel, classrooms, and a library, located on Park Avenue.

Steady increases in the student population led to the purchase of 80 acres in northwest Norfolk. The development of the new campus included a library, cafeteria, dormitories, gymnasium, and an administration building. For the next 36 years, students from 40 states and 15 countries received quality Christian education and pursued their callings to impact churches and communities around the world.

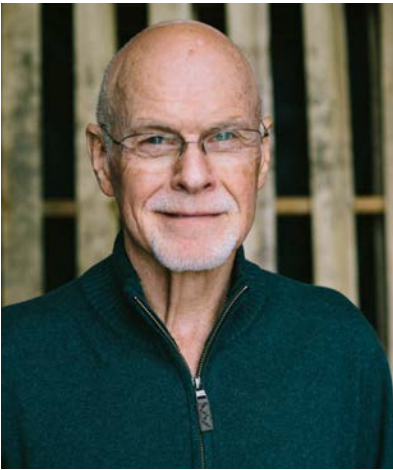
NC relocated to Papillion, in the Omaha metro area, in 2006, offering students a wider array of opportunities to minister by putting their classroom studies into practice. NC alumni now serve Christ and His Church around the globe.

PARK AVENUE CHAPEL
CIRCA 1959



MINISTRY EQUIPPING CENTER
PRESENT DAY

MERGER PERSPECTIVE
NC PROFESSOR DAVID HAYNES



David Haynes, Associate Professor of Preaching Ministry, has been preaching since 1971 and teaching students at Nebraska Christian College since 2004. During his tenure, he has experienced a number of changes that have benefited the institution and its students, and he is particularly enthusiastic about the merger between HIU and NC.

“Years ago, when the campus moved from Norfolk to Papillion, it gave students more opportunity to be involved in ministry, because of our proximity to Omaha,” said Professor Haynes. “Now this merger with HIU raises us several more notches.”

Haynes notes that he isn’t the only one who anticipates great outcomes from the merger, as regional ministry leaders are pleased, as well. Officials at the Nebraska campus initially expected some reticence from alumni, but Haynes commented that many of the

alumni understand the challenges of higher education and see this merger as a growth opportunity for the students who follow them.

“We are dedicated to raising up church leaders and we have many successful alumni,” he said. “These alumni consider it a blessing that the students who are following them will now have many more academic options, as they pursue careers, such as teaching or counseling, through the online programs.”

Haynes added that the faculty and staff are excited too, and he compared the joining of the two institutions to the unification of long-lost family members. “It’s like we discovered some family members that we didn’t know we had,” he laughed, “and they turned out to be great!”



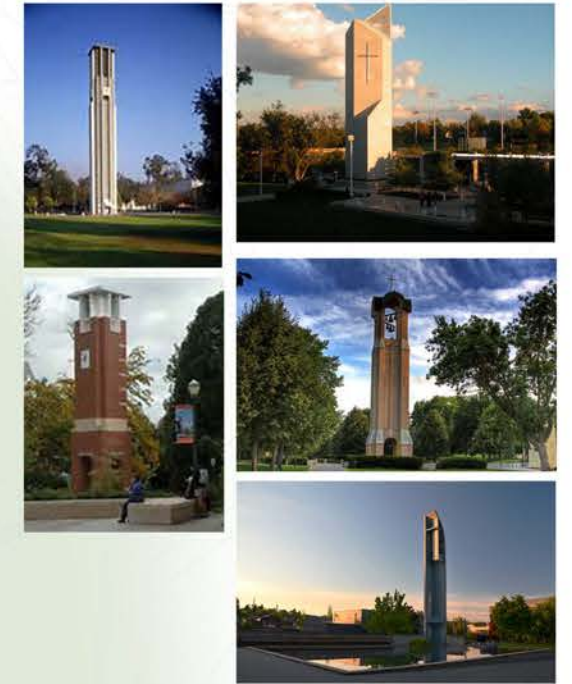
EXTERIOR COMPONENTS



ARCHITECTURAL ELEMENTS



PORTALS



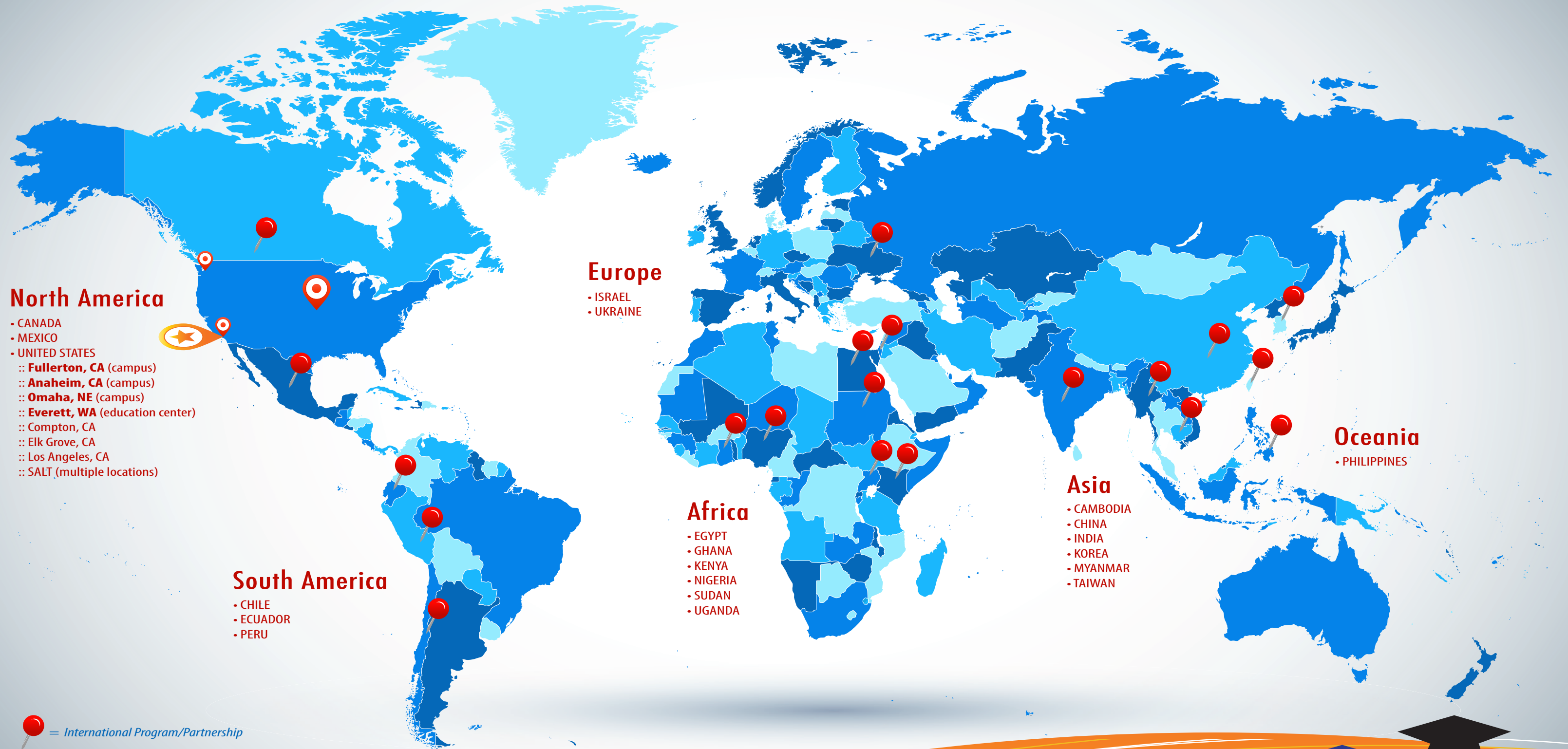
CAMPANILES



NEBRASKA CAMPUS MASTER PLAN (CONCEPT)

OUR GLOBAL IMPACT & INFLUENCE

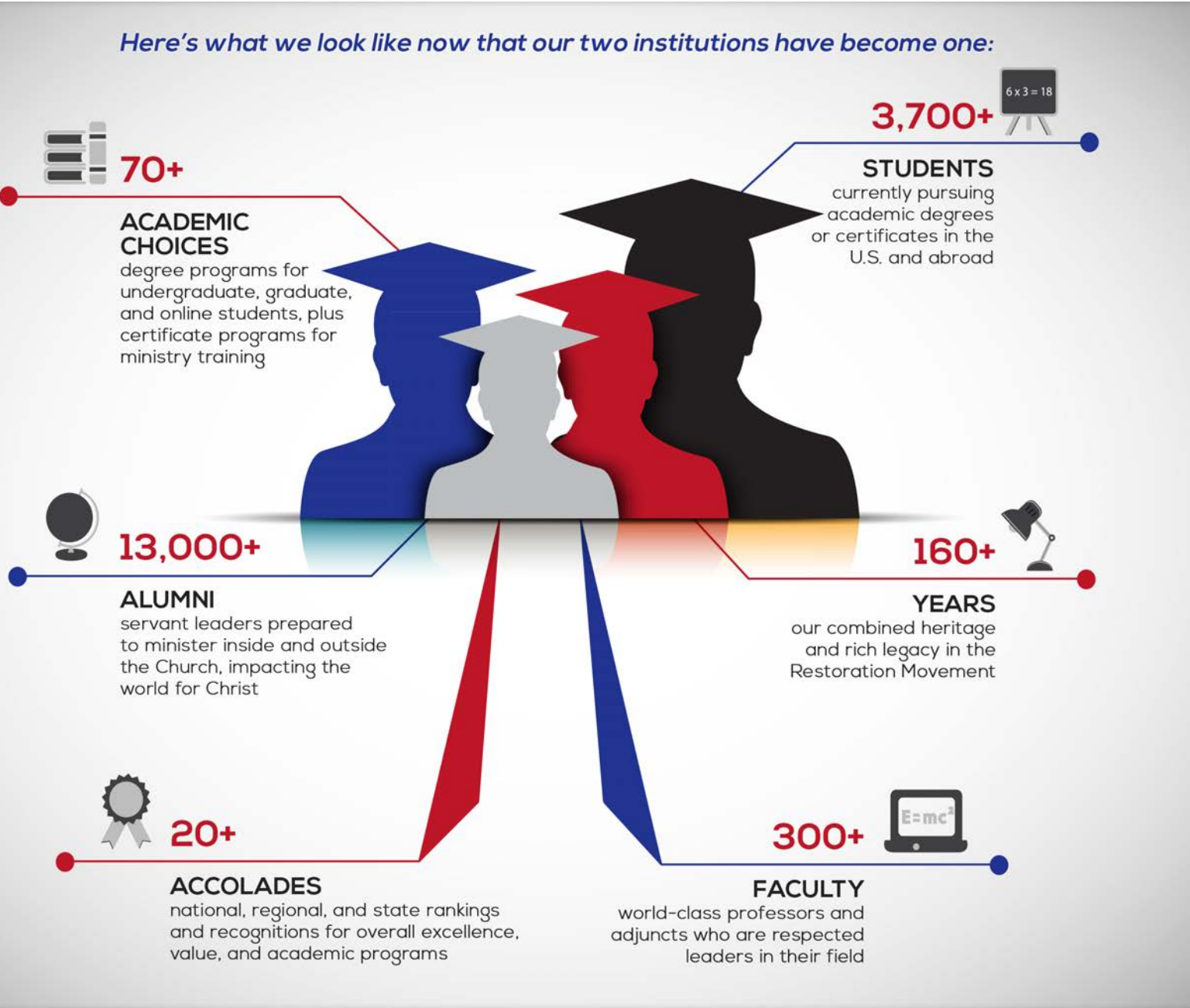
WORLDWIDE PROGRAMS & PARTNERSHIPS



21 COUNTRIES
3700+ STUDENTS // 13,000+ ALUMNI



STRENGTH IN NUMBERS



COMBINED ANNUAL BUDGET: **\$30,000,000**
TOTAL ASSETS: **\$65,000,000**

CAMPUS SNAPSHOTS



Fullerton, CA
Our main residential campus is located in North Orange County, in the city of Fullerton, California. The campus is easily accessible from the 57 freeway between Chapman and Nutwood Avenues. The Fullerton campus boasts recently-renovated state of the art classrooms, student dining facilities, student lounges, a fitness center, bookstore, on-campus housing, full-service library, and much more.



Anaheim, CA
Located in Anaheim's "Platinum Triangle," this campus is the hub of HIU's programs for working adults and graduate students. With close freeway access, well-furnished facilities, wireless internet access, and an onsite computer lab, the Anaheim Campus is a great option for busy adult learners. Students can relax in the student lounge, work on assignments in the study rooms, or take advantage of nearby shops and eateries.



Papillion, NE
Overlooking the Omaha skyline, our NC campus spans 80+ acres of land with more than 60,000 square feet of classrooms, dorm suites, student center, cafeteria and faculty and staff offices. There are also two four-plex apartment buildings for married students. The state-of-the-art Ministry Equipping Center has a 500-seat auditorium, as well as classrooms, practice rooms, video/audio editing suites, a preaching lab, and a coffee bar.



Everett, WA
The University Education Center is located on the campus of Everett Community College, in Everett, Washington. The 77,000 square foot "green" building hosts state of the art classrooms, computer labs, and student lounges with wireless access. The campus also features advanced technology to support distance and online coursework. All amenities of Everett Community College are available to HIU students as part of our partnership with the University Center of North Puget Sound.

ACADEMIC PROGRAMS

COLLEGE OF ARTS & SCIENCES

- Associate of Arts** ●●
- Bachelor of Arts** ●
 - English Literature
 - Liberal Arts*
 - Communication
 - Criminal Justice
 - Customized Area
 - Pre-Physical Therapy
- Social Science
 - Human Services
 - Customized Concentration
 - History
 - Political Science

COLLEGE OF BUSINESS & MANAGEMENT

- Bachelor of Arts** ●
 - Business & Management
 - Accounting
 - Management
 - Marketing
 - Sports Management
 - Cross-Cultural Bus. Admin.
 - Customized Concentration
- Bachelor of Science** ●
 - Business Administration
- Master of Business Administration** ●
 - General Management
 - International Development
 - Marketing Management
 - Non-Profit Management
 - Business as Mission/Social Entrepreneurship
 - Customized Concentration
- Master of Science in Management** ●
 - General Management
 - International Development
 - Marketing Management
 - Non-Profit Management
 - Business as Mission/Social Entrepreneurship
 - Customized Concentration

COLLEGE OF EDUCATION

- Bachelor of Arts** ●●
 - Liberal Studies/Teacher Prep.
 - Early Childhood Education
 - Elementary Education
 - Secondary Education: English
 - Secondary Education: Social Science
- Master of Arts in Educational Administration** ●
- Master of Arts in Educational Administration with PAS Credential** ●
- Master of Education** ●
 - Elementary Education
 - Secondary Education
 - Gifted & Talented Education (GATE)
 - Music Education
 - Personalized Learning
- Credential Programs** ●
 - Teaching Credentials:
 - Preliminary Multiple Subject
 - Preliminary Single Subject
 - Services Credential:
 - Preliminary Administrative

PACIFIC CHRISTIAN COLLEGE OF MINISTRY & BIBLICAL STUDIES

- Bachelor of Arts** ●
 - Biblical Studies
 - Children and Family Ministry
 - Church Ministry
 - Intercultural Studies
 - Children & Family Ministry
 - Youth & Family Ministry
 - Specialized Concentration
 - Youth & Family Ministry
- Bachelor of Music** ●
 - Worship Arts
- Bachelor of Science** ●
 - Christian Ministry
- Master of Arts** ●
 - Ministry
 - Ministry & Leadership
 - Biblical Studies
 - Children, Youth, & Family
 - Church Planting
 - Intercultural Studies
 - Pastoral Care
 - Spiritual Formation
 - Worship Ministry
- Master of Church Music** ●
 - Worship Arts

Master of Divinity ●

- Ministry/Divinity
 - Ministry & Leadership
 - Biblical Studies
 - Children, Youth, & Family
 - Church Planting
 - Intercultural Studies
 - Pastoral Care
 - Spiritual Formation
 - Worship Ministry

COLLEGE OF PSYCHOLOGY & COUNSELING

- Bachelor of Arts** ●
 - Psychology
 - General
 - Infant & Toddler Mental Health
 - Child & Adolescent Development
 - Child Life Specialist
 - Social Science
 - Child & Adolescent Development
- Bachelor of Science** ●
 - Human Development
 - Community Mental Health & Counseling
 - Family Studies
- Master of Arts in Marriage & Family Therapy** ●

THE MERGER PROCESS PHASES & TIMELINE

EXPLORATORY PHASE: This was the period of time for the schools to become better acquainted and to form an initial opinion on the concept of a merger. It was intentionally informal – simply an opportunity to consider the current environment in higher education and whether or not such a move had merit and potential for success. During this phase, HIU and NC determined there was value in taking the next step, and signed a non-binding Memorandum of Understanding to proceed with a more focused study.

ANALYSIS PHASE: This was an extended period of due diligence to identify the benefits and risks of a merger. The intent was to gather information and to consider what would be the impact of such a venture. It required transparency and open communication on the part of all stakeholders. The goal was to gather sufficient data and details to be able to prepare a proposal and recommendations for the governing boards.

DESIGN PHASE: Blending two institutions, each with its own organizational culture and unique set of characteristics, is a process that requires great care. Exactly how the new merged entity will be structured, managed, and operated must be clearly defined. Some preliminary concepts were necessary in the Analysis Phase; this third phase called for input from persons who have experience in restructuring organizations for greater efficiency and effectiveness. A consultant was engaged to assist in this intricate process.

INTEGRATION PHASE (current): The final phase is the most intense and takes much longer to implement fully. It is the most critical to long-term success and the most impactful on the day-to-day operation of the schools. As in the Design Phase, a professional consultant will work with the administration to ensure a smooth transition and to propose best practices.

KEY BENEFITS OF THE MERGER

- :: Expands the breadth of degrees offered in the Midwest region by adding HIU's undergraduate, graduate, and online programs
- :: Strengthens the Christian higher education presence in both regions
- :: Provides strategic and long-term financial sustainability
- :: Preserves and honors the rich heritage of Nebraska Christian College
- :: Gives regional accreditation to NC's academic programs
- :: Facilitates the best stewardship of Kingdom resources

JOINT LEADERSHIP

- John Derry**, Ed.D., President
- Paul Alexander**, Ph.D., Vice President for Academic Affairs
- Frank Scotti**, Vice President for Business & Finance
- Teresa Smith**, Vice President for Enrollment Management
- Michael Mulryan**, Vice President for Institutional Advancement
- Mark Comeaux**, Ed.D., Vice President for Student Affairs
- Tony Clark**, Associate Vice President for Business & Operations, NC Campus
- Mark Krause**, Ph.D., Academic Dean, NC Campus

PROGRAM KEY:
● Undergraduate On Campus
● Undergraduate Online
● Graduate

**CONTRACT PROGRAMS WITH CALIFORNIA STATE UNIVERSITY FULLERTON: Through a partnership, we are able to offer academic programs that blend coursework from HIU and CSUF, thereby offering our California resident students a wider array of program options. CSUF is located across the street from HIU's Fullerton campus.*

“This decision reflects the type of innovative response that will enable Christian higher education to continue impacting the world for Christ.” —Toby Yurek, Chair of HIU’s Board of Trustees



OUR BOARD OF TRUSTEES

Gene Appel is the Senior Pastor of Eastside Christian Church in Anaheim, CA. He also served as Senior Pastor of Central Christian Church, Las Vegas, and Lead Pastor of Willow Creek Community Church, South Barrington, IL. He co-authored *How to Change your Church without Killing It*, authored *Dream Intruders* and *Healing Hidden Hurts*, and was an award-winning television commentator for CBS-2 in Chicago. He and his wife, Barbara, have three children.

Jan Baird is Executive Producer (IMAX Films) for KZ Communications in El Segundo, CA. She has previously served as Vice President for Community Transportation Services, Executive Director of LAX Area Chamber of Commerce, Development Director for National EducationOrg, and serves on the Board of a non-profit related to Hodgkin's Disease. She and her husband, Mitch, are members of Journey of Faith church in Manhattan Beach and are parents to a son and daughter.

Glenn Carpenter retired as Chairman and CEO of FountainGlen Properties, a privately-held company, which specializes in senior housing development and operation. He founded and served as CEO for the publicly-held Pacific Gulf Properties, Inc., and served as CEO and Executive Vice President for Santa Anita Realty Enterprises, Inc. He has served as a Board member for a number of development corporations and the University of Southern California. He is married to Pat, and they are both deeply involved in the Fullerton community.

Christine Clausen is President of Carson Feeder, Inc., in Carson, Iowa, which she took over after the death of her husband in 2012. She has previously served as a middle school math teacher, and still substitute teaches and tutors at Treynor High School. Christine serves on the Board of Directors for Treynor State Bank and Deaf Child Hope, and ministers through speaking to women about their potential to serve God. She is an involved member of First Christian Church of Council Bluffs and is the mother of two sons.

Michael Harrison is an MIT-trained Engineer for Northrop-Grumman, who has a keen interest in filmmaking, which he pursues in his spare time. Michael serves as an elder at University Christian Church in Los Angeles, CA.

Jeremy Jernigan is Executive Pastor of Creative Arts for Central Christian Church in Mesa, AZ, who also oversees the weekend worship experiences of the church. Jeremy, a second generation pastor, is the author of *Crowd Sourcing the Message* and *Redeeming Pleasure*. He and his wife, Michelle, are the parents of three children.

Dana Joanou is a Partner in the Certified Public Accounting firm of Kushner, Smith, Joanou & Gregson, LLP, in Irvine, CA. He is responsible for the firm's personnel matters, new client development, client service, scheduling, staff recruitment, and technical review; he also sits on several Boards and Audit Committees for local non-profit organizations. Dana is a member of Voyagers Bible Church and he and his wife, Heidi, are the parents of three college-age children.

Richard Lukas is retired, after serving as Administrator for Christ's Church of the Valley in San Dimas, CA. He served previously as Assistant Director of the Bureau of Street Lighting for the City of Los Angeles. Richard and wife, Elaine, are the parents of two children.

Lynn Londen is President of Londen Land Company in Phoenix, Arizona and is CEO of AZTV, a locally-owned and operated TV station. She has been involved in fundraising in both Omaha, NE, and Washington, D.C.

Kevin Odor is Senior Pastor of Canyon Ridge Christian Church in Las Vegas, NV. He has also served in staff ministry positions at Worthington Christian Church and Bridgetown Church of Christ (both in Ohio) and Williamsburg Christian Church in Virginia. He and his wife, Ginger, are the parents of three children.

Chuck Puckett retired as Director, National Accounts, from Hunt-Wesson Foods in 2000, and continues a career in civic leadership that began in the 1970s. He has led the City of Tustin, CA as Mayor, City Council member, Planning Commissioner, and in numerous other leadership positions, including service on a number of non-profit boards. He and his wife, Donna, are members of Journey Christian Church in Irvine, CA, and are the parents of two children and grandparents of four grandchildren.

Don Rowe is Vice President for Retail Sales for Millard Lumber, Inc., in Omaha, NE, and is the former owner of Crowl's Kitchens and Baths in Lincoln, NE. He serves on the Board of Directors of the Metro Omaha Builders Association. Don and his wife, Marcy, are members of Kingsway Christian Church, and are the parents of three children and grandparents of eleven grandchildren.

Drew Sherman is Lead Pastor of Compass Christian Church in Colleyville, TX, and also led a partnership team for a church plant in Boston. He has served in Board positions for several other Christian organizations, including Dallas Christian College. Drew and his wife, Michelle, are the parents of three children.

James Taylor retired after 25 years with Lockheed Aircraft after serving in positions that included Vice President of International Development, Vice President of Business, and President of Lockheed Aircraft Argentina. He has served on the Fulbright Scholarship Commission and serves as President of Lockheed Retirees for Orange County, Riverside, and San Bernardino, CA. Jim and his wife, Janet, are members of Eastside Christian Church and are the parents of three children and three grandchildren.

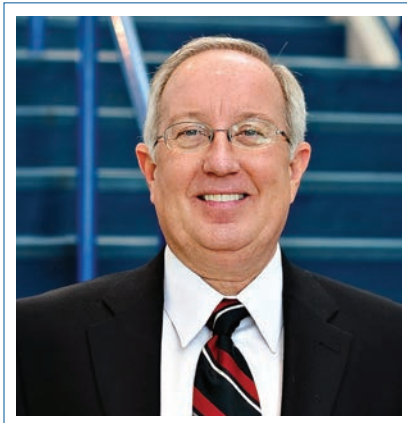
Bruce Templeton recently retired as Senior Minister of First Christian Church, Huntington Beach, CA, and is now Pastor of Unity Christian Church, in Cynthiana, Kentucky; he also is a Senior Consultant with Ling Consulting Group in Winchester, Kentucky. Bruce previously served in ministry positions in Indiana, Kentucky, and Virginia, and has served as Chaplain for the Huntington Beach Police Department. He and his wife, Connie, are the parents of one son and the grandparents of two granddaughters.

Thaddeaus (Toby) Yurek, III is an attorney with the firm of Green, Goldberg, Roby & Martinez. He earned his Master of Criminal Justice and Juris Doctorate degrees while serving with the Henderson, NV, Police Department. Toby serves on the Board of Directors for the Lake Mead Christian Academy. He and his wife, Carrie, are members of Hope Baptist Church, and are the parents of three children.

“The synergy created by our merger allows both HIU and NC to be even more effective in our Kingdom work.”
—Don Rowe, HIU Trustee (Nebraska)



OUR PRESIDENT JOHN L. DERRY



Dr. John Derry assumed the presidency of Hope International University in 2003, building upon a career of distinguished pastoral, campus, and academic ministries. His leadership has yielded measurable and unprecedented achievement for the University, its students and alumni, and the Christian church. **HIU's merger with NC represents**

a milestone in President Derry's vision to strengthen Christian higher education through collaborations and partnerships.

Notable accomplishments and decisions of President Derry's service to HIU include a number of accreditations, program enhancements, and a coordination of efforts to benefit the community, as well as HIU's student body. Highlights of his presidency include:

- Accreditation by the Association for Biblical Higher Education (for the College of Ministry and Biblical Studies) and the Commission for the Accreditation of Marriage and Family Therapy Education (for the Marriage and Family Therapy program)
- Approval to offer all academic programs in Washington, leading to the creation of The Education Center in Everett, WA
- Expansion of distance education offerings (addition of undergraduate teacher preparation to online programs is currently in progress)
- Establishment of the School of Advanced Leadership Training (SALT) to develop educational partnerships with churches in the United States and Canada
- Restructure of academic divisions into the University's five Colleges
- Acquisition of the south campus property, followed by approval of the City for sale and development of new student apartment housing
- Joint venture with California State University, Fullerton, and the City of Fullerton to develop the local area into "CollegeTown"

- Relocation of graduate and online offices, classrooms, and Hope Counseling Center to new Anaheim campus
- Achievement of all-time record enrollment
- Expansion of international education programs
- Growth and achievement of athletics programs; several men's and women's teams have advanced to their respective national finals

President Derry earned his Bachelor's degree from Lincoln Christian College and Master's degrees from Lincoln Christian Seminary at Lincoln Christian College in Illinois (Theology & Philosophy) and Western Illinois University (Education). He completed his Doctor of Education degree in Educational Leadership and Policy Analysis with an emphasis in Higher Education at East Tennessee State University.

Dr. Derry was ordained to the ministry while pursuing his post-graduate studies, and his ministry positions include senior pastoral ministry at Vermont Christian Church (Vermont, IL) and Isabel Christian Church (near Lewistown, IL). His campus work includes establishment of a Campus Ministry at Western Illinois University, and service as Vice President for Student Development at Milligan College (Tennessee) and President of Dallas Christian College. He was also awarded an Honorary Doctorate of Theology degree from Seoul Christian University.

The President has served the local and education communities as a Director on the Boards of organizations that include Communities in Schools, Christian Student Fellowship, Consortium for Service-Learning, Rotary Club, Lincoln Christian College and Seminary Alumni Association, North American Christian Convention, National Missionary Convention, the Association for Christians in Student Development, Provision Ministry Group, Christian Care California, and as an elder for two congregations.

Dr. Derry and his wife, Jane are members of Eastside Christian Church in Anaheim CA. They are the parents of two children and grandparents of eight grandchildren.

Our name, HOPE INTERNATIONAL UNIVERSITY, suggests continuity with the past and expanded opportunities for the future. The word "hope," with its Biblical roots and its visionary etymology, is appropriate for a Christian institution of higher education; the word "international" speaks directly to HIU's mission.





ON CAMPUS // ONLINE // GRADUATE



2500 NUTWOOD AVE
FULLERTON, CA 92831
HIU.EDU
888•352•HOPE



12550 SOUTH 114th ST
PAPILLION, NE 68046
NECHRISTIAN.EDU
402•935•9400